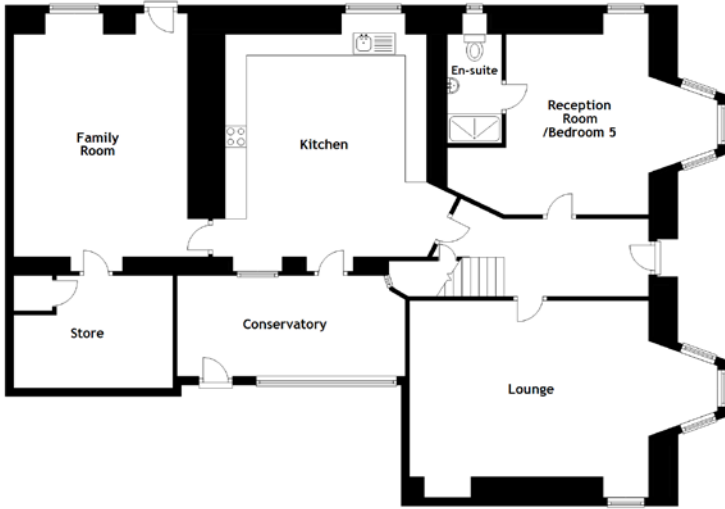


FLOOR PLAN, DIMENSIONS & MAP



Approximate Dimensions (Taken from the widest point)

Ground Floor

Lounge	7.35m (24'1") x 4.20m (13'9")
Kitchen	4.80m (15'9") x 4.62m (15'2")
Family Room	4.80m (15'9") x 4.15m (13'7")
Conservatory	5.35m (17'7") x 2.40m (7'10")
Store	3.80m (12'6") x 2.50m (8'2")
Bedroom 5	6.45m (21'2") x 4.30m (14'1")
En-suite	2.60m (8'6") x 1.30m (4'3")

First Floor

Bedroom 1	3.35m (11') x 2.85m (9'4")
-----------	----------------------------

En-suite	3.80m (12'6") x 1.85m (6'1")
Bedroom 2	4.80m (15'9") x 3.20m (10'6")
En-suite	1.85m (6'1") x 1.45m (4'9")
Bedroom 3	4.90m (16'1") x 3.20m (10'6")
En-suite	2.40m (7'11") x 2.40m (7'11")
Bedroom 4	4.90m (16'1") x 2.40m (7'11")
En-suite	2.40m (7'11") x 2.35m (7'8")

Gross internal floor area (m²): 225m²

EPC Rating: E

Extras: Two static caravans, one industrial freezer unit.

