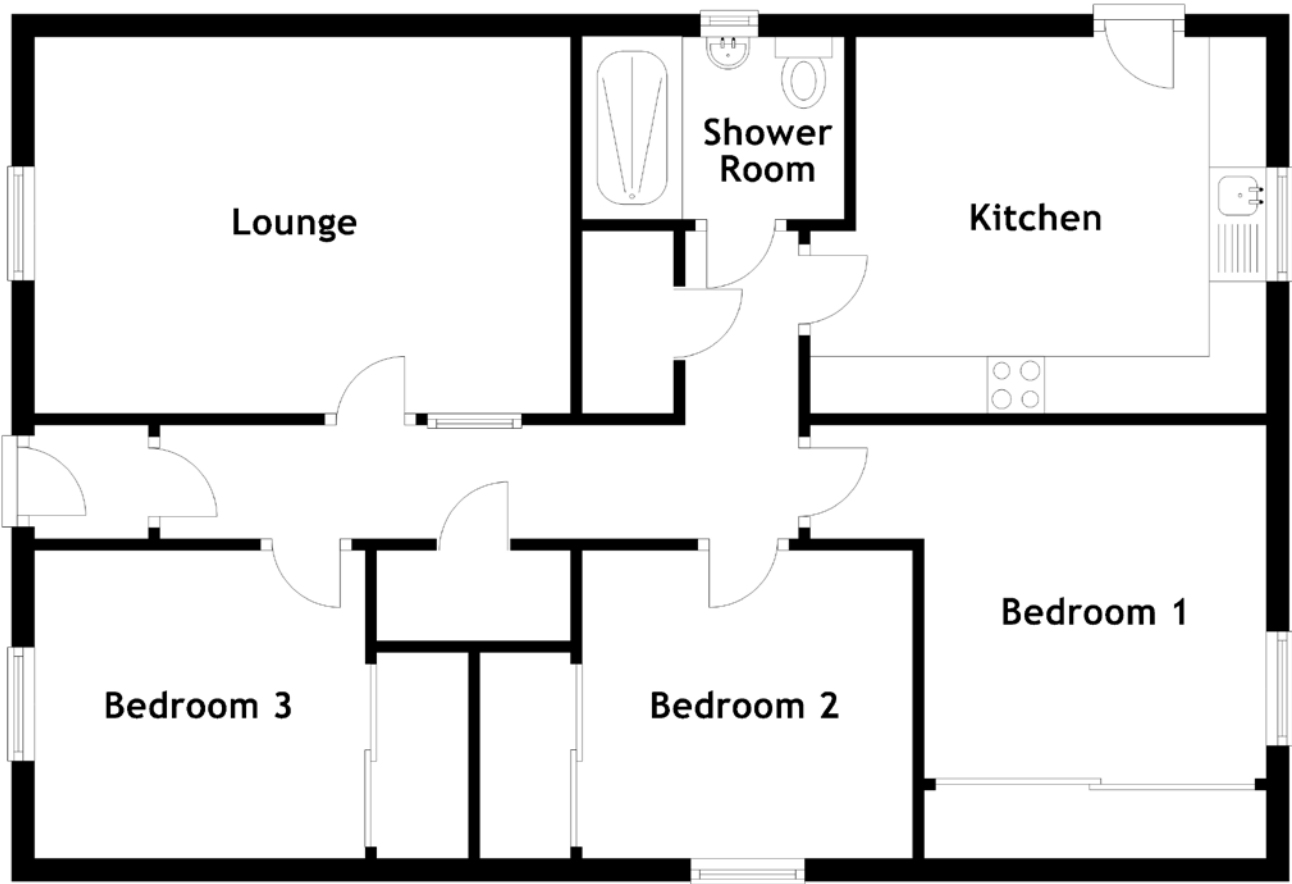


FLOOR PLAN, DIMENSIONS & MAP



Approximate Dimensions (Taken from the widest point)

Lounge 4.70m (15'5") x 3.30m (10'10")
 Shower Room 2.30m (7'7") x 1.60m (5'3")
 Kitchen 4.00m (13'1") x 3.30m (10'10")

Bedroom 1 4.00m (13'1") x 3.10m (10'2")
 Bedroom 2 2.90m (9'6") x 2.70m (8'10")
 Bedroom 3 2.90m (9'6") x 2.70m (8'10")

Gross internal floor area (m²): 74m² | EPC Rating: C

