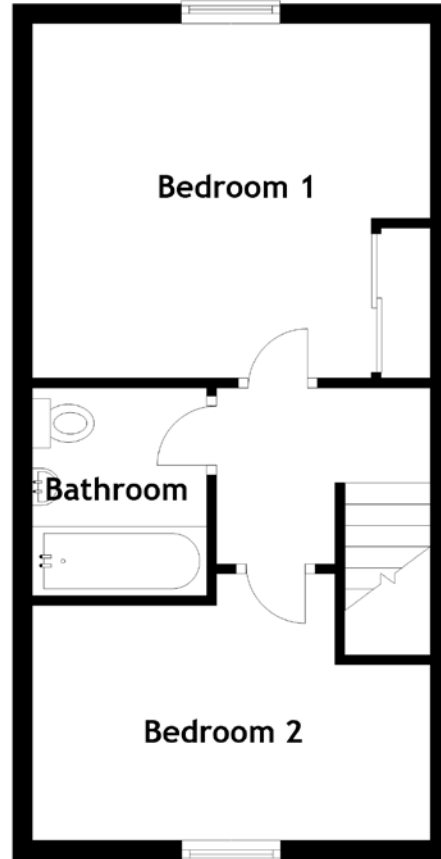
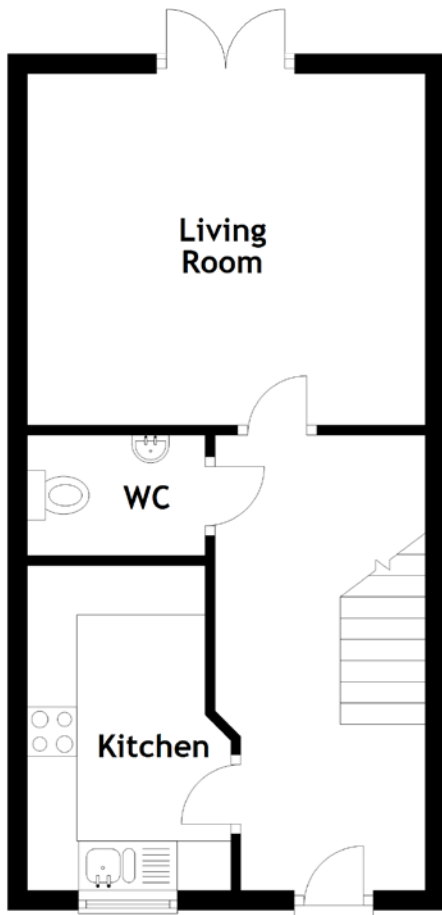


FLOOR PLAN, DIMENSIONS & MAP



Approximate Dimensions (Taken from the widest point)

Living Room 4.03m (13'3") x 3.56m (11'8")
 Kitchen 3.29m (10'10") x 1.80m (5'11")
 WC 1.80m (5'11") x 1.22m (4')

Bathroom 2.10m (6'11") x 1.77m (5'10")
 Bedroom 1 4.03m (13'3") x 3.59m (11'9")
 Bedroom 2 4.03m (13'3") x 2.70m (8'10")

Gross internal floor area (m²): 66m² | EPC Rating: C

