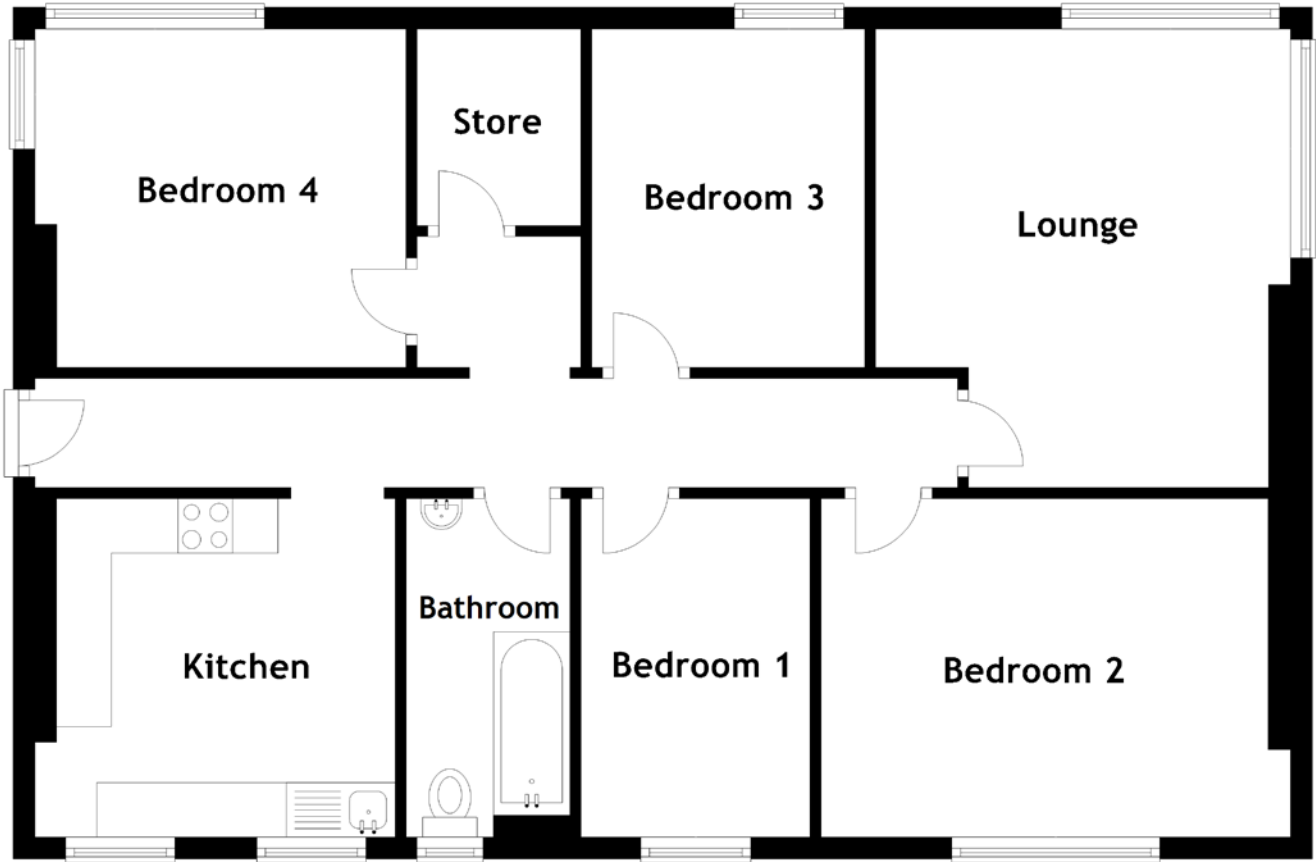


FLOOR PLAN, DIMENSIONS & MAP



Approximate Dimensions
(Taken from the widest point)

Lounge	4.20m (13'9") x 3.80m (12'6")
Kitchen	3.30m (10'10") x 3.10m (10'2")
Bedroom 1	3.10m (10'2") x 2.10m (6'11")
Bedroom 2	4.30m (14'1") x 3.10m (10'2")

Bedroom 3	3.10m (10'2") x 2.50m (8'2")
Bedroom 4	3.40m (11'2") x 3.10m (10'2")
Bathroom	3.10m (10'2") x 1.50m (4'11")
Store	1.80m (5'11") x 1.50m (4'11")

Gross internal floor area (m²): 79m²
EPC Rating: C

