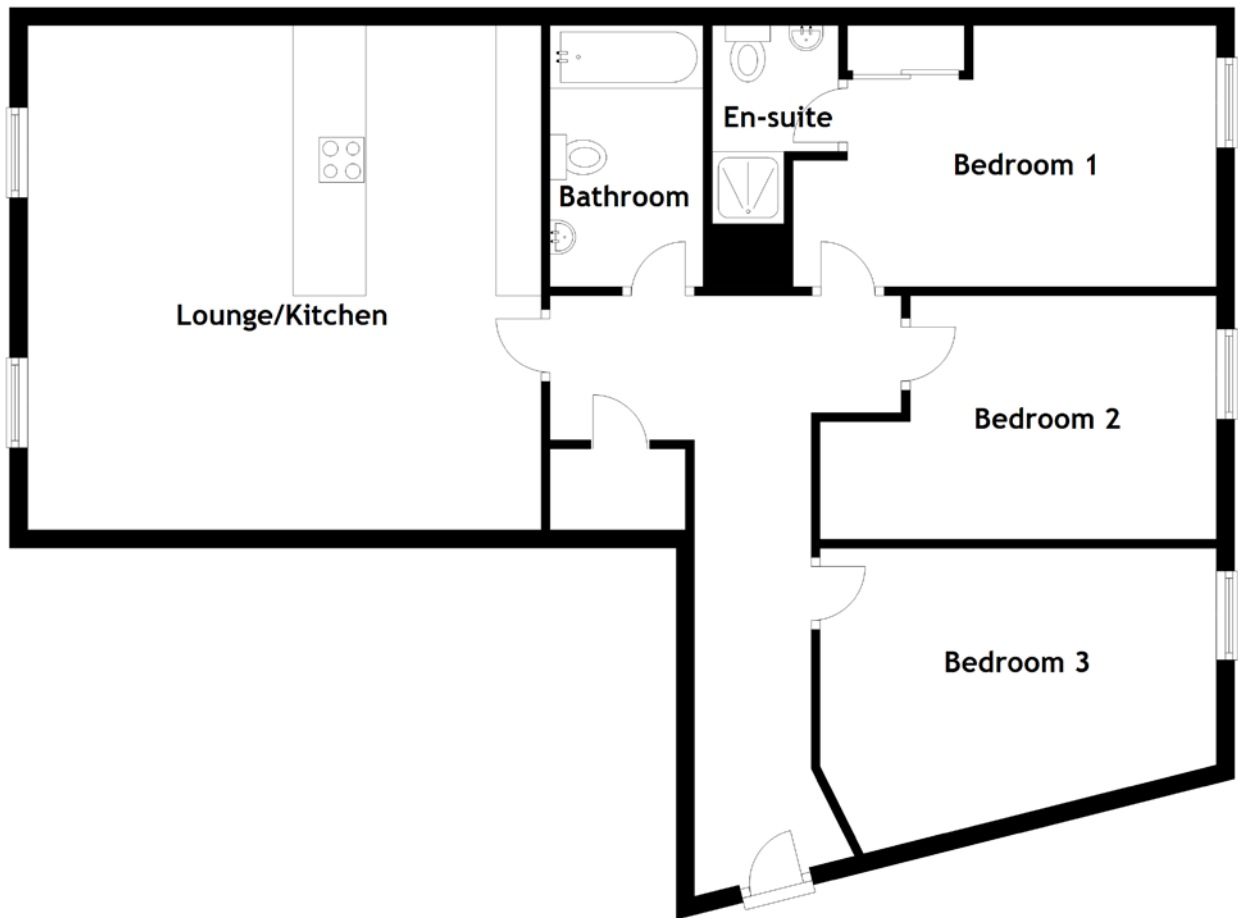


# FLOOR PLAN, DIMENSIONS & MAP



Approximate Dimensions (Taken from the widest point)

Lounge/Kitchen	5.70m (18'8") x 5.60m (18'4")
Bathroom	2.90m (9'6") x 1.70m (5'7")
Bedroom 1	4.70m (15'5") x 2.90m (9'6")
En-suite	2.20m (7'3") x 1.40m (4'7")
Bedroom 2	4.40m (14'5") x 2.70m (8'10")

Bedroom 3

4.40m (14'5") x 3.40m (11'2")

Gross internal floor area (m<sup>2</sup>): 96m<sup>2</sup>  
EPC Rating: B

Extras: Floor coverings, light fittings, window dressings and integrated appliances.

