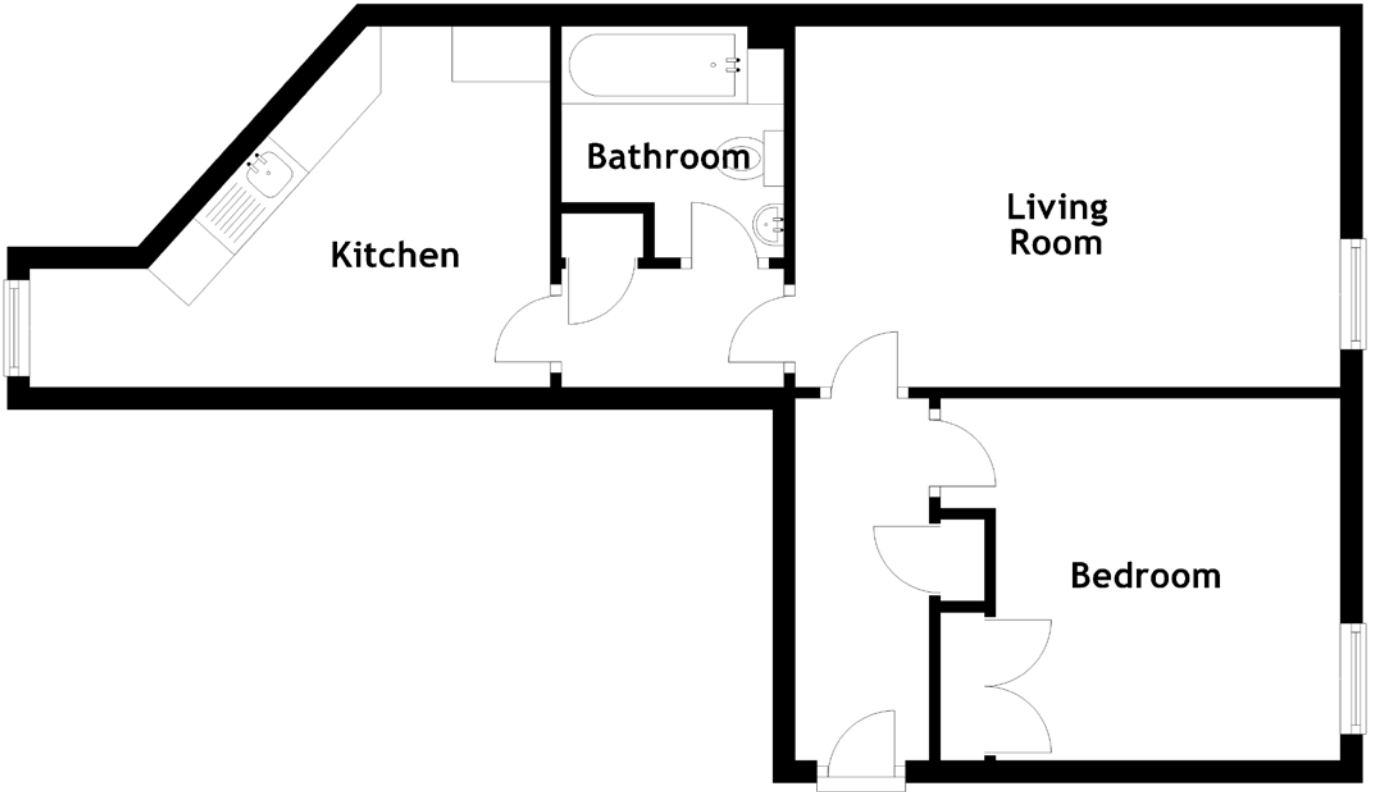


FLOOR PLAN, DIMENSIONS & MAP



Approximate Dimensions
(Taken from the widest point)

Living Room 4.92m (16'2") x 3.26m (10'8")
Kitchen 4.70m (15'5") x 3.26m (10'8")

Bedroom 3.61m (11'10") x 3.27m (10'9")
Bathroom 2.09m (6'10") x 2.01m (6'7")

Gross internal floor area (m²): 55m²
EPC Rating: C

