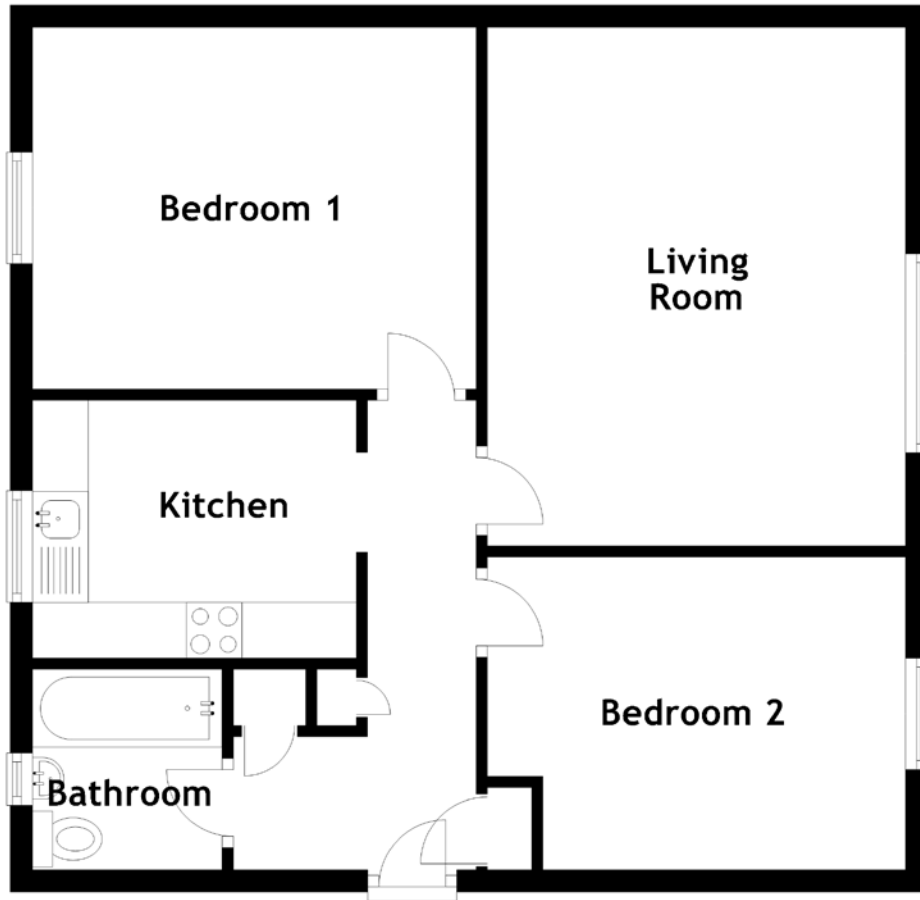


FLOOR PLAN, DIMENSIONS & MAP



Approximate Dimensions (Taken from the widest point)

Living Room 4.66m (15'3") x 3.76m (12'4")
 Kitchen 2.91m (9'7") x 2.25m (7'5")
 Bedroom 1 3.99m (13'1") x 3.25m (10'8")

Bedroom 2 3.76m (12'4") x 2.81m (9'3")
 Bathroom 1.80m (5'11") x 1.71m (5'7")

Gross internal floor area (m²): 60m²
 EPC Rating: C

