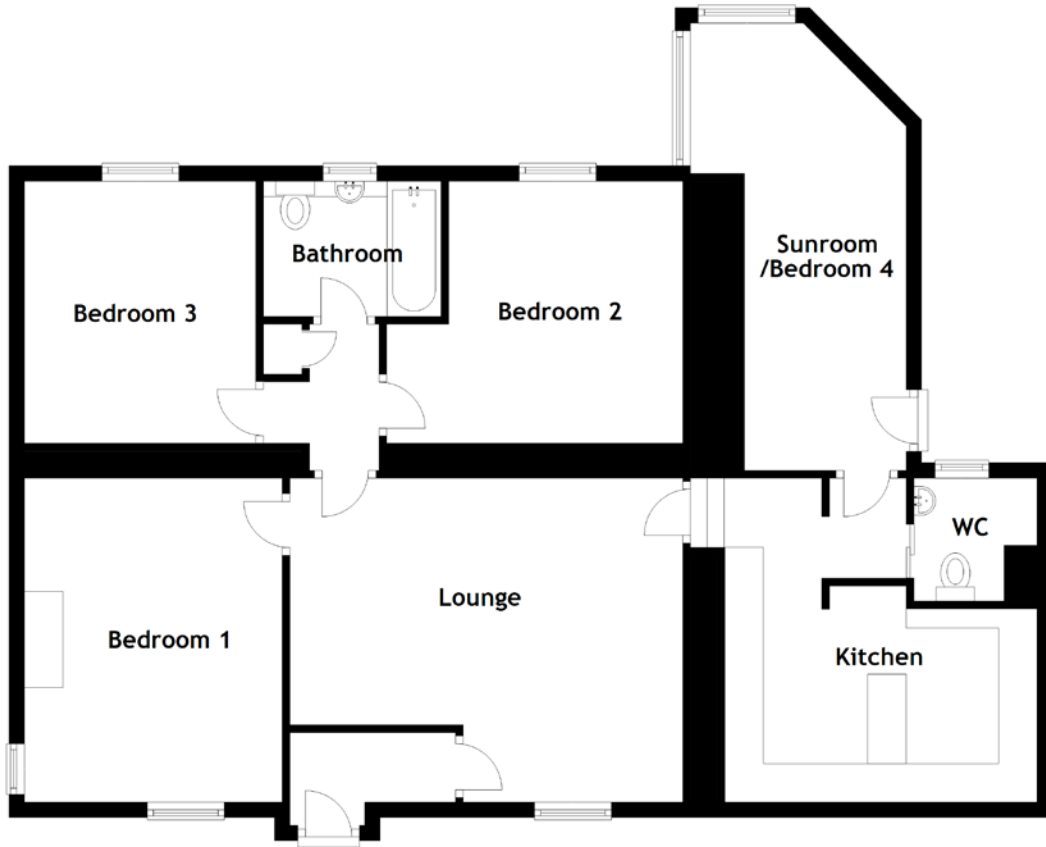


FLOOR PLAN, DIMENSIONS & MAP



Approximate Dimensions
(Taken from the widest point)

Lounge 5.10m (16'9") x 4.20m (13'9")
 Kitchen 4.05m (13'4") x 3.20m (10'6")
 WC 1.60m (5'3") x 1.50m (4'11")
 Bathroom 2.30m (7'7") x 1.75m (5'9")

Bedroom 1 4.20m (13'9") x 3.35m (11')
 Bedroom 2 3.85m (12'7") x 3.40m (11'2")
 Bedroom 3 3.40m (11'2") x 3.00m (9'10")
 Sunroom/Bedroom 4 5.80m (19') x 2.80m (9'2")

Gross internal floor area (m²): 106m²
 EPC Rating: D

