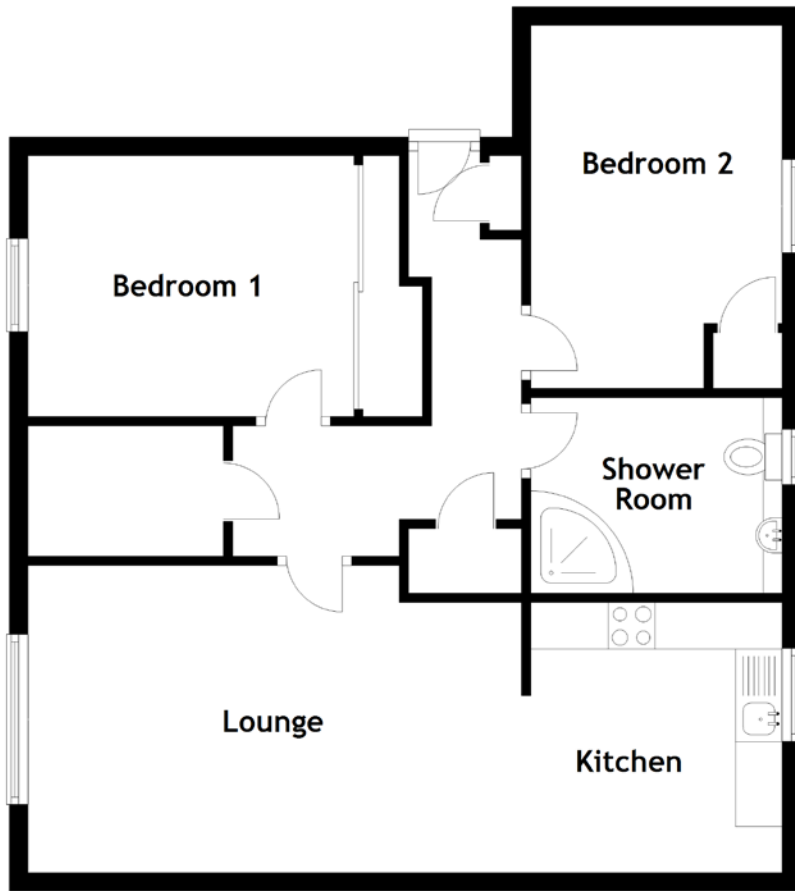


FLOOR PLAN, DIMENSIONS & MAP



Approximate Dimensions (Taken from the widest point)

Lounge 5.30m (17'5") x 3.30m (10'10")
 Kitchen 2.90m (9'6") x 2.70m (8'10")
 Shower Room 2.50m (8'2") x 2.10m (6'11")

Bedroom 1 3.50m (11'6") x 2.80m (9'2")
 Bedroom 2 3.90m (12'10") x 2.50m (8'2")

Gross internal floor area (m²): 67m²
 EPC Rating: C

