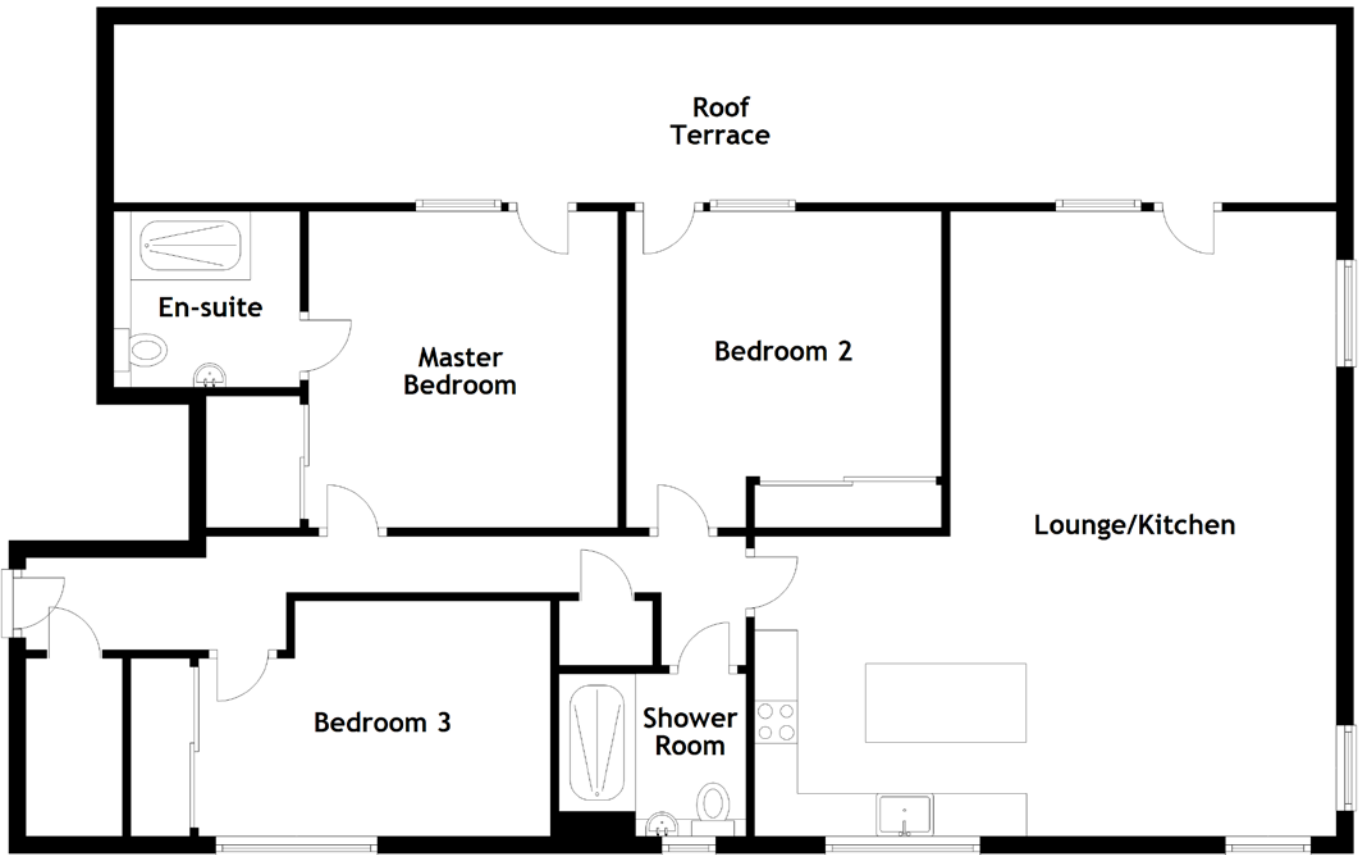


FLOOR PLAN, DIMENSIONS & MAP



Approximate Dimensions (Taken from the widest point)

Lounge/Kitchen 7.31m (24') x 6.81m (22'4")
 Shower Room 2.19m (7'2") x 1.90m (6'3")
 Master Bedroom 3.70m (12'2") x 3.62m (11'11")
 En-suite 2.18m (7'2") x 2.06m (6'9")

Bedroom 2 3.70m (12'2") x 3.69m (12'1")
 Bedroom 3 4.12m (13'6") x 2.75m (9")
 Roof Terrace 14.31m (46'11") x 2.08m (6'10")

Gross internal floor area (m²): 112m²
 EPC Rating: B

