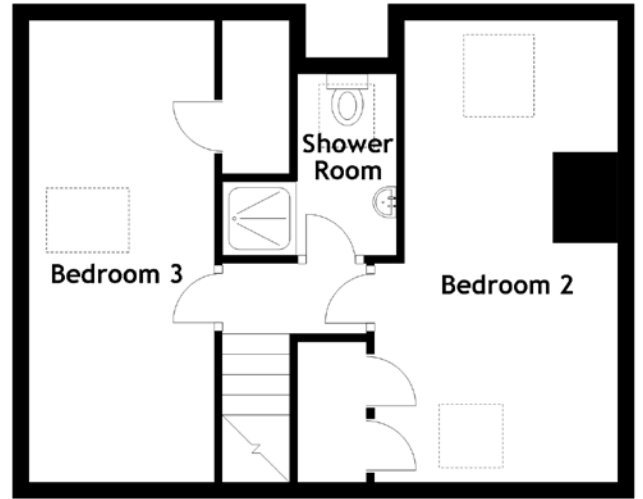
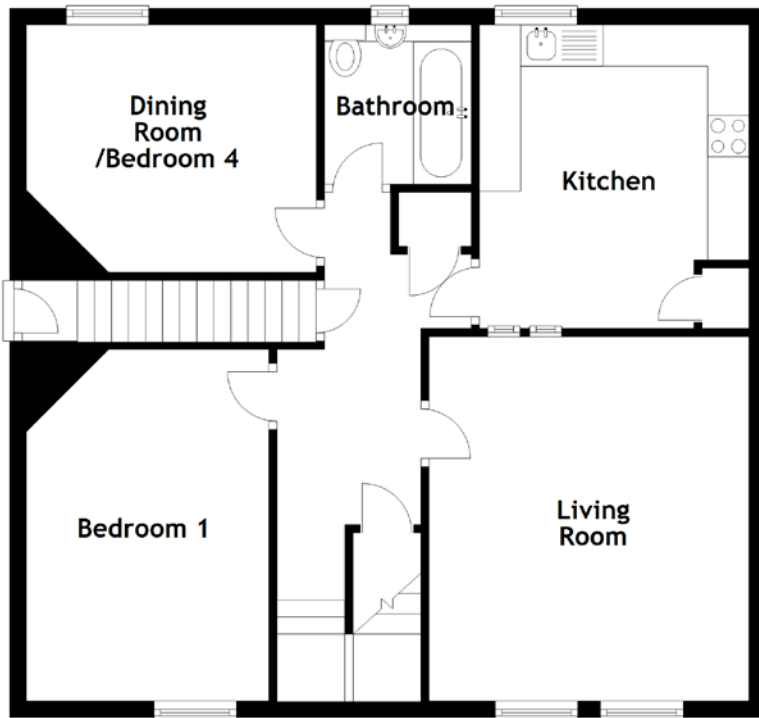


FLOOR PLAN, DIMENSIONS & MAP



Approximate Dimensions
(Taken from the widest point)

Living Room	4.42m (14'6") x 3.88m (12'9")
Kitchen	3.68m (12'1") x 3.27m (10'9")
Bedroom 1	4.26m (14') x 2.94m (9'8")
Bedroom 2	5.60m (18'5") x 2.95m (9'8")

Bedroom 3	5.60m (18'5") x 2.25m (7'5")
Dining Room/Bedroom 4	3.52m (11'7") x 3.00m (9'10")
Shower Room	2.20m (7'3") x 2.04m (6'8")
Bathroom	1.93m (6'4") x 1.78m (5'10")

Gross internal floor area (m²): 116m²
EPC Rating: C

