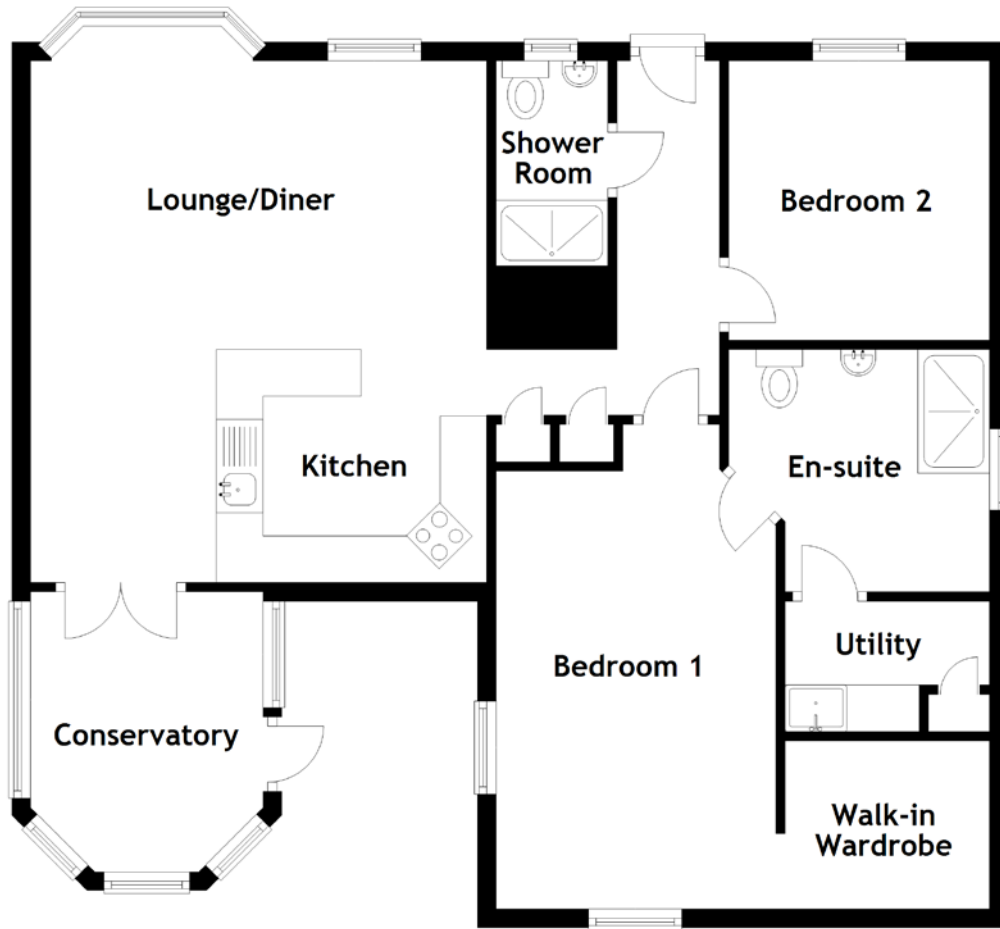


FLOOR PLAN, DIMENSIONS & MAP



Approximate Dimensions
(Taken from the widest point)

Lounge/Diner	5.60m (18'4") x 4.90m (16'1")
Kitchen	2.90m (9'6") x 2.50m (8'2")
Bedroom 1	5.20m (17'1") x 3.00m (9'10")
En-suite	2.80m (9'2") x 2.60m (8'6")

Utility	1.80m (5'11") x 1.40m (4'7")
Bedroom 2	3.00m (9'10") x 2.80m (9'2")
Shower Room	2.20m (7'3") x 1.20m (3'11")
Conservatory	3.00m (9'10") x 2.50m (8'2")

Gross internal floor area (m²): 83m²
EPC Rating: E

