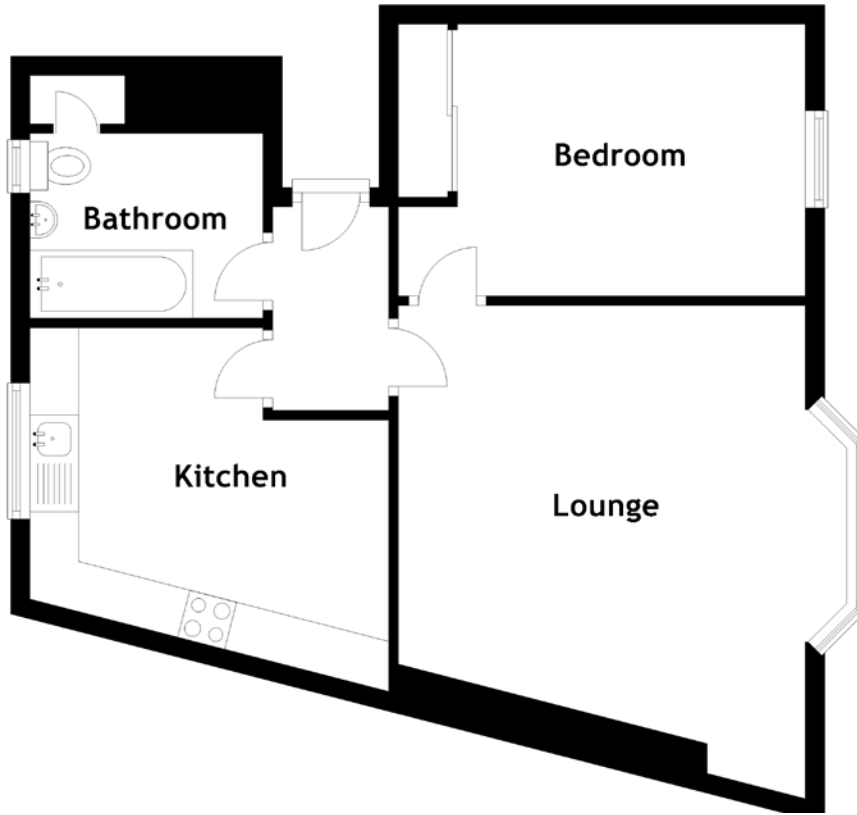


FLOOR PLAN, DIMENSIONS & MAP



Approximate Dimensions (Taken from the widest point)

| | |
|----------|-------------------------------|
| Lounge | 5.10m (16'9") x 4.20m (13'9") |
| Kitchen | 3.75m (12'4") x 3.70m (12'2") |
| Bedroom | 4.20m (13'9") x 2.80m (9'2") |
| Bathroom | 2.40m (7'11") x 1.90m (6'3") |

Gross internal floor area (m²): 50m²
EPC Rating: D

Extras: All fitted floor coverings, curtains, blinds, light fittings and shades are included. Additional soft furnishings and electrical items are by separate negotiation.

