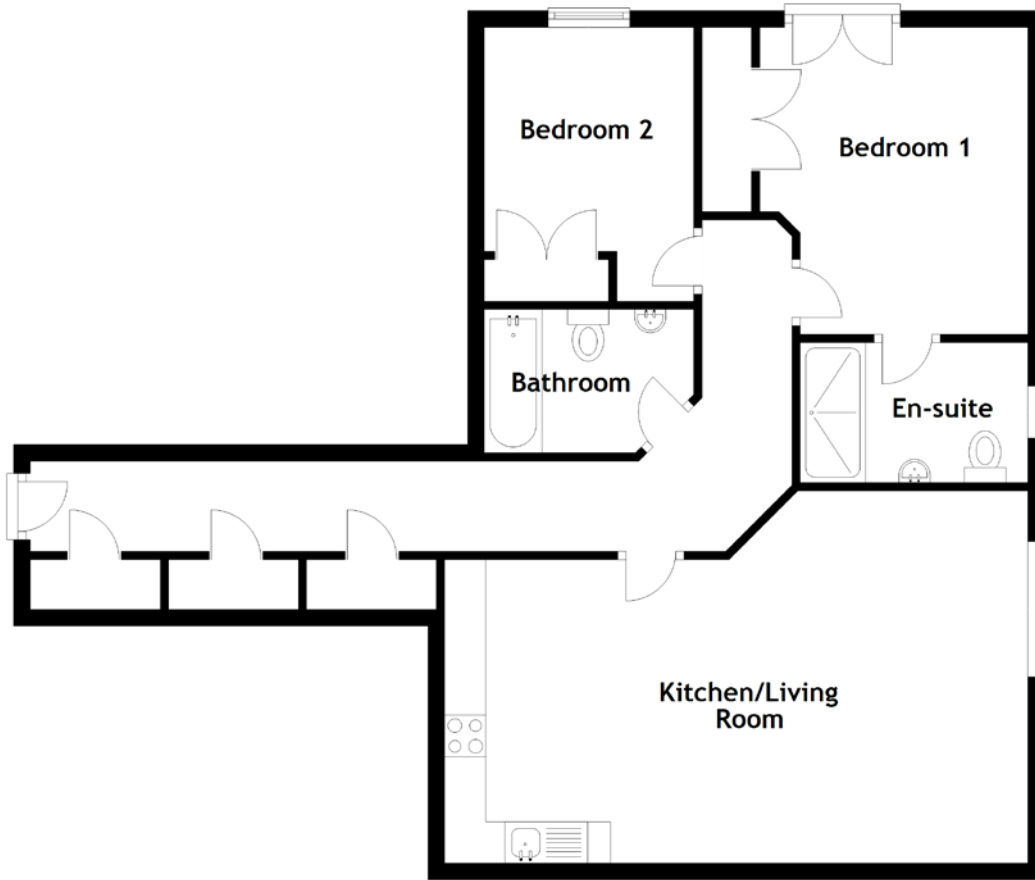


FLOOR PLAN, DIMENSIONS & MAP



Approximate Dimensions (Taken from the widest point)

Kitchen/Living Room 7.05m (23'2") x 4.50m (14'9")
 Bedroom 1 3.71m (12'2") x 3.24m (10'8")
 En-suite 2.75m (9') x 1.69m (5'7")

Bedroom 2 3.31m (10'10") x 2.53m (8'4")
 Bathroom 2.53m (8'4") x 1.78m (5'10")

Gross internal floor area (m²): 78m²
 EPC Rating: B

