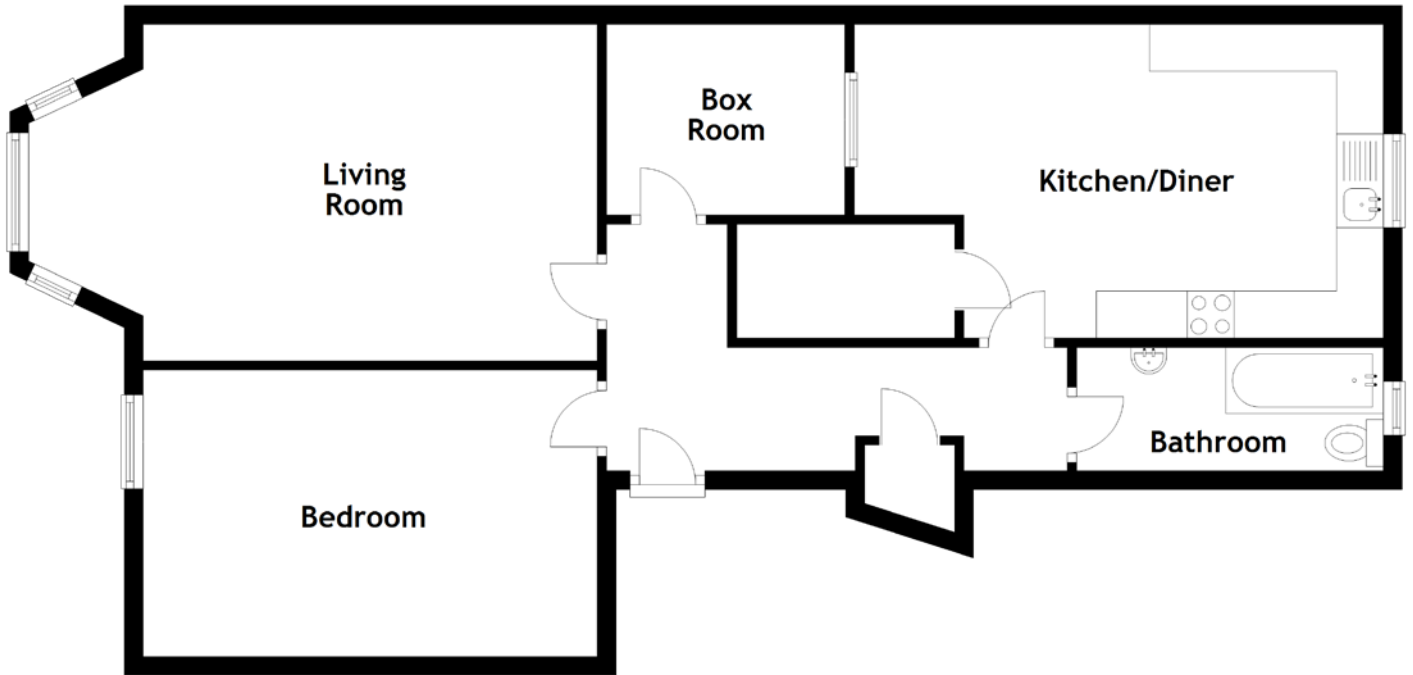


FLOOR PLAN, DIMENSIONS & MAP



Approximate Dimensions
(Taken from the widest point)

Living Room 6.06m (19'11") x 3.58m (11'9")
 Kitchen/Diner 5.64m (18'6") x 3.34m (10'11")
 Bedroom 4.84m (15'11") x 3.05m (10')

Box Room 2.54m (8'4") x 2.03m (6'8")
 Bathroom 3.27m (10'9") x 1.31m (4'4")

Gross internal floor area (m²): 75m²

EPC Rating: C

