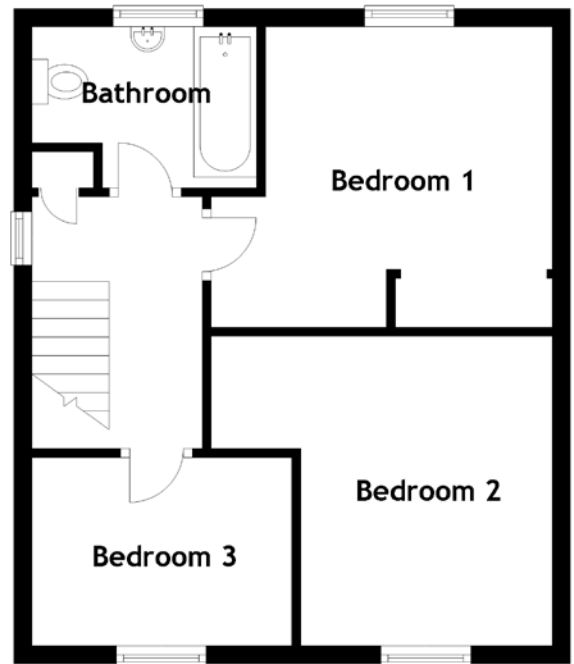
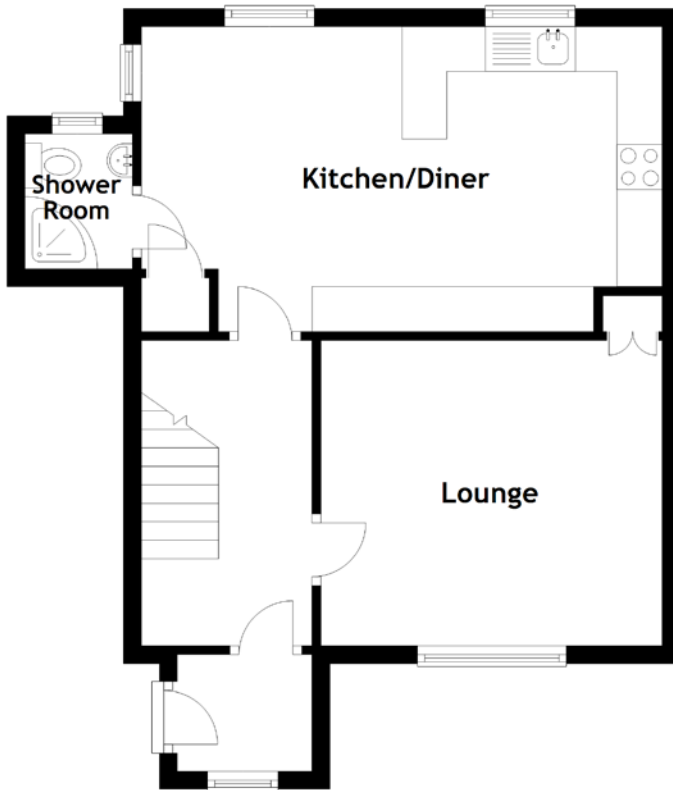


FLOOR PLAN, DIMENSIONS & MAP



Approximate Dimensions (Taken from the widest point)

Lounge	3.80m (12'6") x 3.40m (11'2")
Kitchen/Diner	5.80m (19') x 3.40m (11'2")
Shower Room	1.50m (4'11") x 1.20m (3'11")
Bathroom	2.50m (8'3") x 1.80m (5'11")

Bedroom 1	3.80m (12'6") x 3.20m (10'6")
Bedroom 2	3.80m (12'6") x 3.30m (10'10")
Bedroom 3	2.90m (9'6") x 2.10m (6'11")

Gross internal floor area (m²): 81m²
EPC Rating: D

