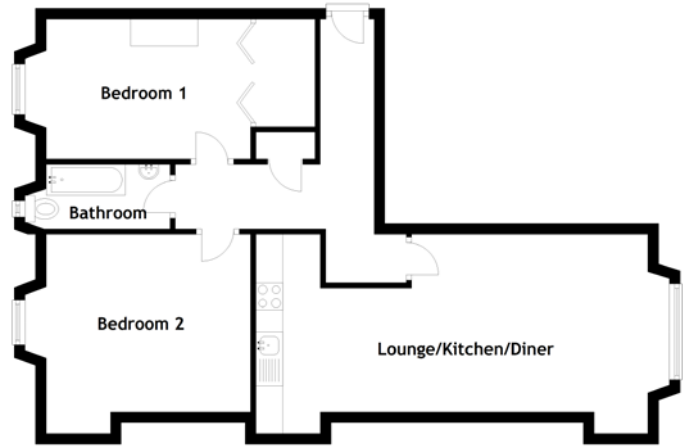


FLOOR PLAN, DIMENSIONS & MAP

CURRENT PLAN



PROPOSED PLAN



Approximate Dimensions (Taken from the widest point)

Lounge 4.80m (15'9") x 3.30m (10'10")
 Kitchen/Diner 5.11m (16'9") x 3.70m (12'2")
 Bathroom 2.70m (8'10") x 1.20m (3'11")
 Bedroom 4.20m (13'9") x 2.60m (8'6")
 Box Room 2.30m (7'7") x 1.50m (4'11")

Lounge/Kitchen/Diner 7.70m (25'3") x 3.70m (12'2")
 Bedroom 1 4.20m (13'9") x 2.60m (8'6")
 Bedroom 2 3.81m (12'6") x 3.70m (12'2")
 Bathroom 2.70m (8'10") x 1.20m (3'11")

Gross internal floor area (m²): 65m² | EPC Rating: D

