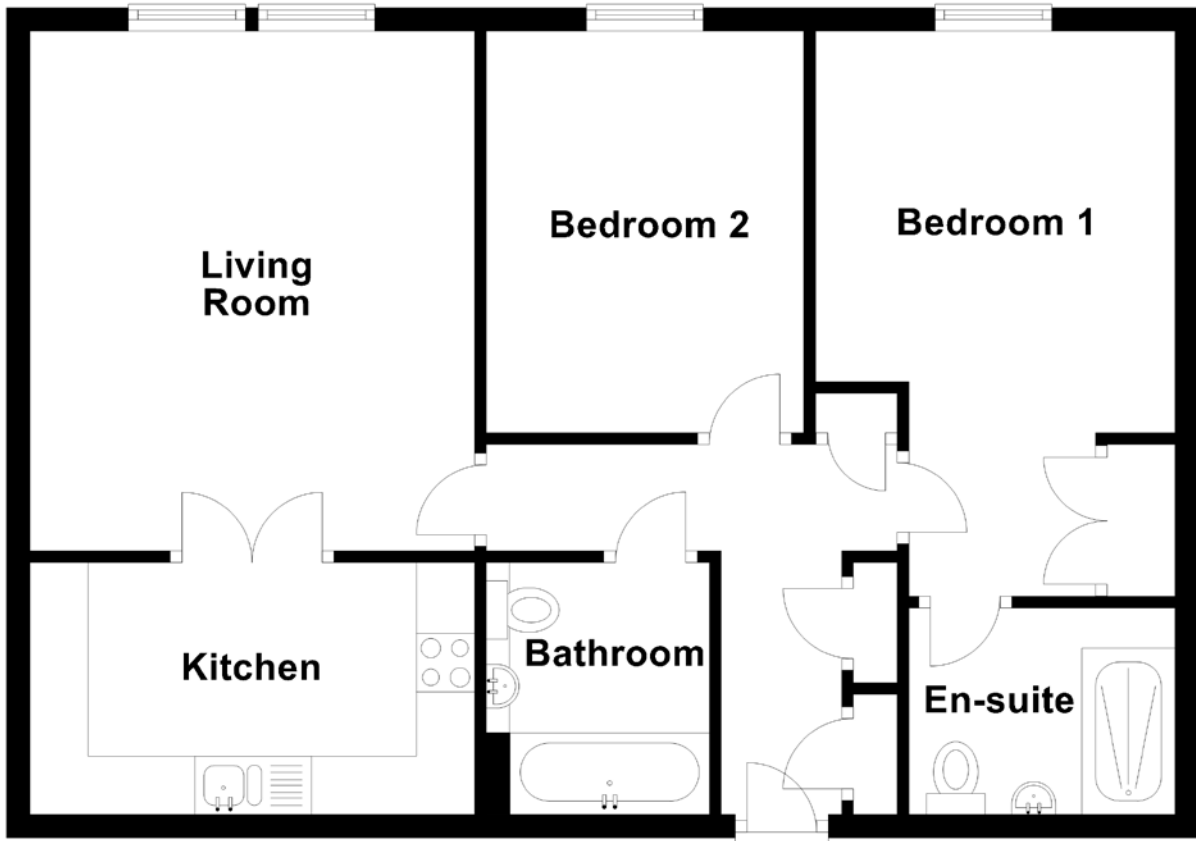


FLOOR PLAN, DIMENSIONS & MAP



Approximate Dimensions (Taken from the widest point)

Living Room 4.45m (14'7") x 3.81m (12'6")
 Kitchen 3.81m (12'6") x 2.16m (7'1")
 Bedroom 1 4.84m (15'11") x 3.08m (10'1")

Bedroom 2 3.44m (11'3") x 2.72m (8'11")
 En-suite 2.28m (7'6") x 1.53m (5')
 Bathroom 2.16m (7'1") x 1.91m (6'3")

Gross internal floor area (m²): 80m² | EPC Rating: C

