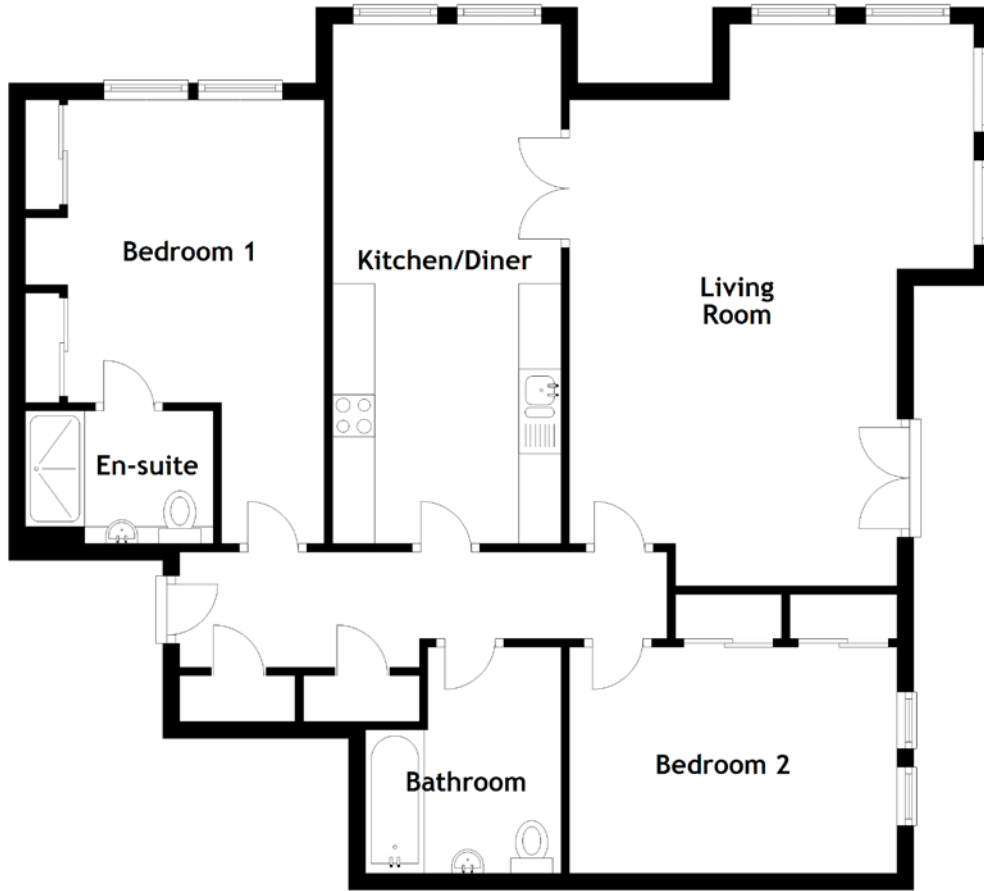


FLOOR PLAN, DIMENSIONS & MAP



Approximate Dimensions
(Taken from the widest point)

Living Room 6.66m (21'10") x 4.80m (15'9")
 Kitchen/Diner 6.16m (20'3") x 2.71m (8'11")
 Bedroom 1 5.26m (17'3") x 3.54m (11'7")

En-suite 2.23m (7'4") x 1.57m (5'2")
 Bedroom 2 3.86m (12'8") x 2.71m (8'11")
 Bathroom 2.68m (8'10") x 2.32m (7'7")

Gross internal floor area (m²): 92m²
 EPC Rating: B

