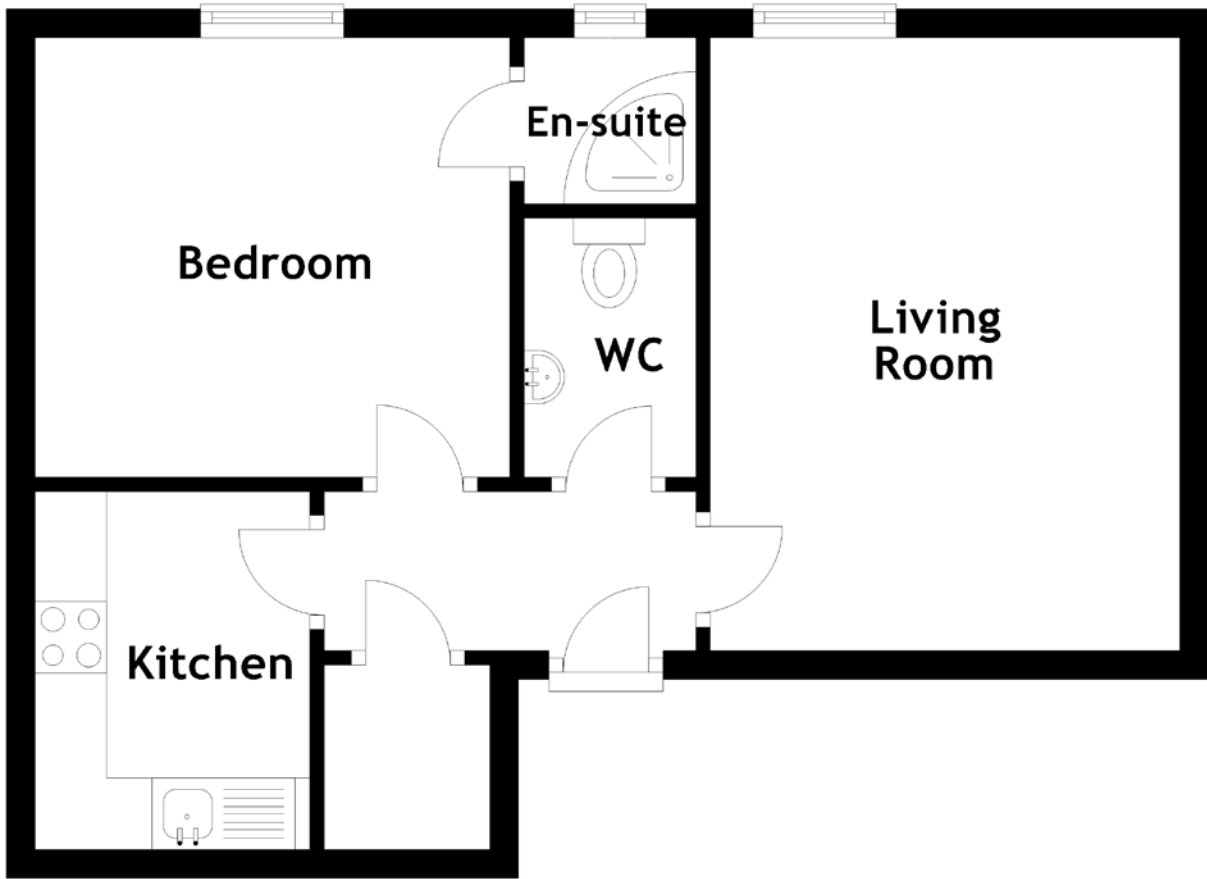


FLOOR PLAN, DIMENSIONS & MAP



Approximate Dimensions (Taken from the widest point)

Living Room 4.28m (14'1") x 3.28m (10'9")
 Kitchen 2.50m (8'2") x 1.92m (6'4")
 WC 1.66m (5'5") x 1.20m (3'11")

Bedroom 3.32m (10'11") x 3.07m (10'1")
 En-suite 1.20m (3'11") x 1.16m (3'10")

Gross internal floor area (m²): 39m²
 EPC Rating: E

