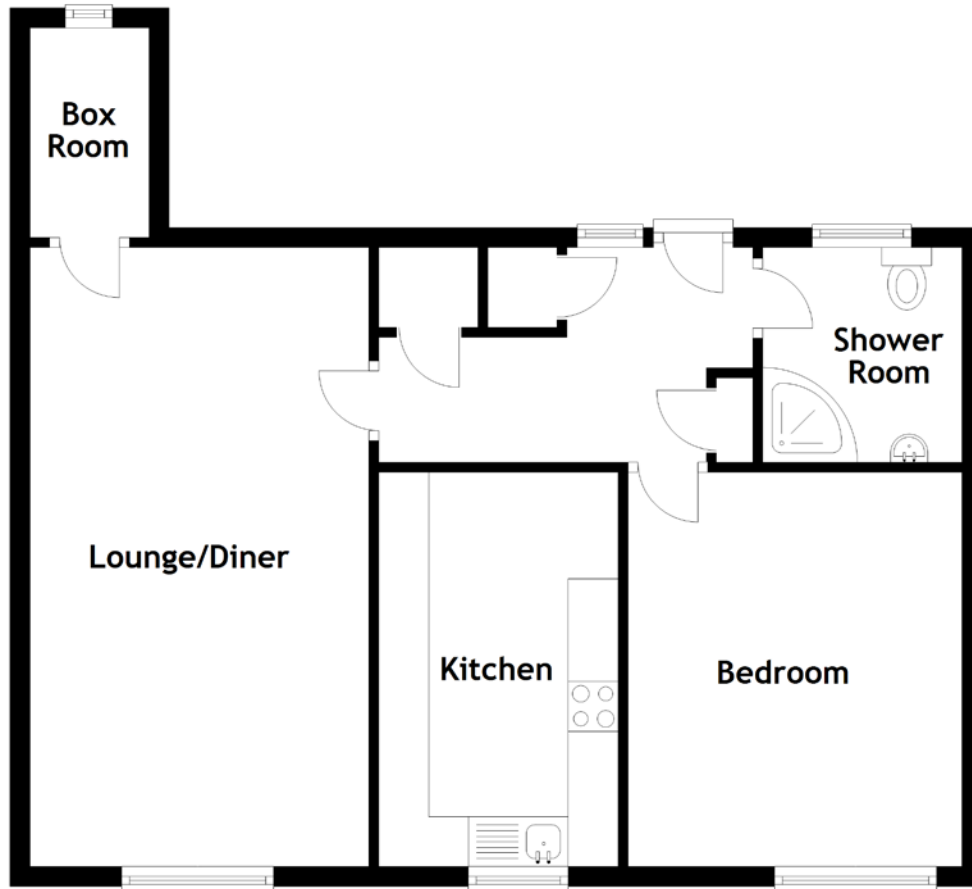


FLOOR PLAN, DIMENSIONS & MAP



Approximate Dimensions
(Taken from the widest point)

Lounge/Diner	6.20m (20'4") x 3.40m (11'2")
Box Room	2.10m (6'11") x 1.20m (3'11")
Kitchen	3.95m (13') x 2.40m (7'10")
Bedroom	3.95m (13') x 3.35m (11')

Shower Room

2.05m (6'9") x 2.00m (6'7")

Gross internal floor area (m²): 63m²
EPC Rating: C

Extras: White goods and furniture may be available by separate negotiation.

