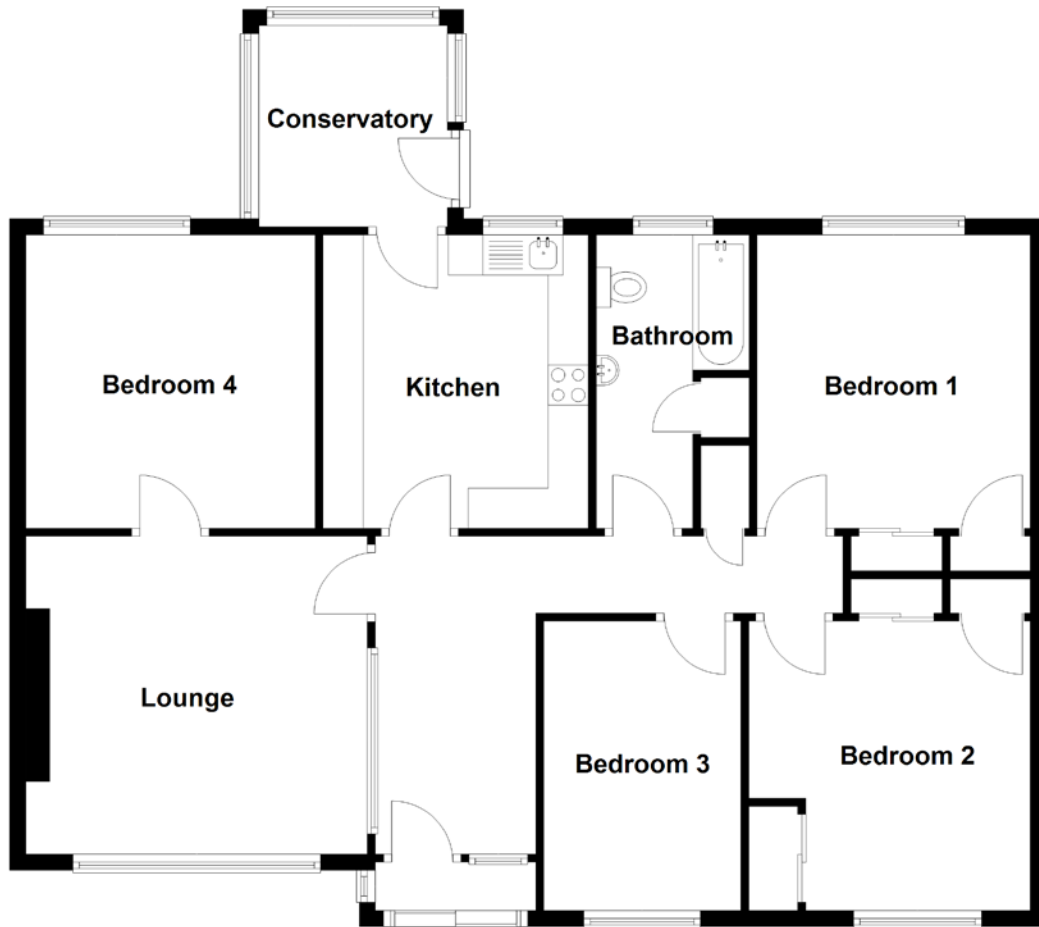


FLOOR PLAN, DIMENSIONS & MAP



Approximate Dimensions
(Taken from the widest point)

Lounge 4.25m (13'11") x 3.95m (13')
 Kitchen 3.65m (12') x 3.30m (10'10")
 Conservatory 2.50m (8'3") x 2.35m (7'8")
 Bedroom 1 3.65m (12') x 3.40m (11'2")

Bedroom 2 3.60m (11'10") x 3.50m (11'6")
 Bedroom 3 3.60m (11'10") x 2.45m (8')
 Bedroom 4 3.65m (12') x 3.60m (11'10")
 Bathroom 3.65m (12') x 1.90m (6'3")

Gross internal floor area (m²): 105m²
 EPC Rating: D

