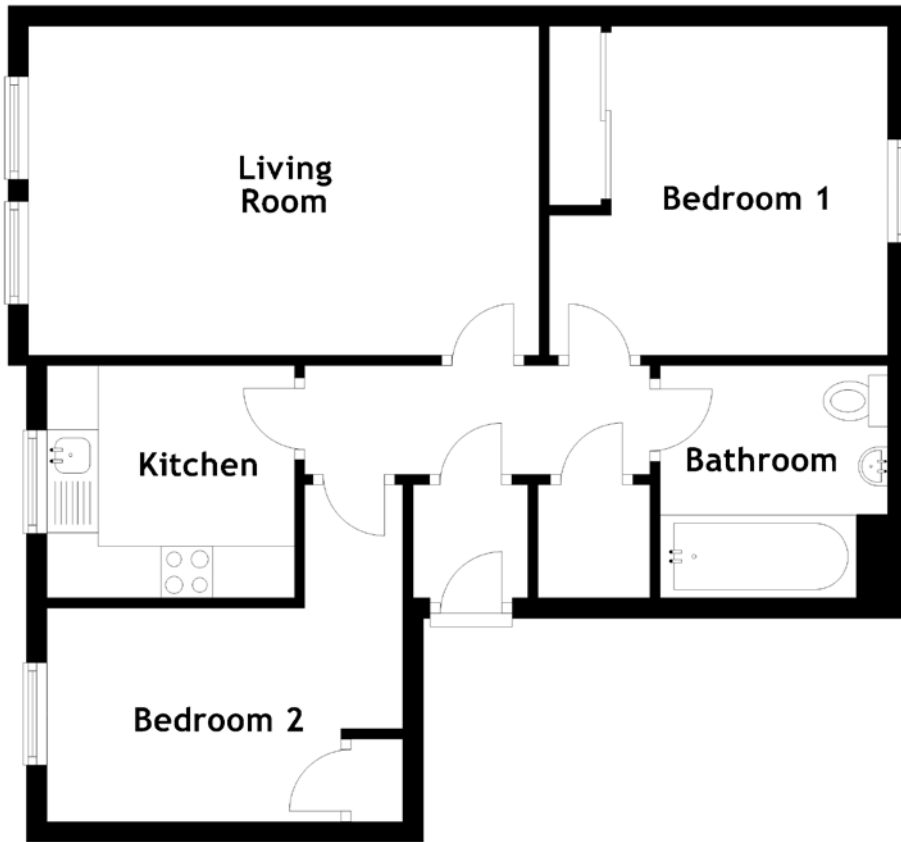


# FLOOR PLAN, DIMENSIONS & MAP



Approximate Dimensions (Taken from the widest point)

Living Room 4.97m (16'4") x 3.20m (10'6")  
 Kitchen 2.41m (7'11") x 2.26m (7'5")  
 Bathroom 2.24m (7'4") x 2.21m (7'3")

Bedroom 1 3.29m (10'10") x 3.20m (10'6")  
 Bedroom 2 3.47m (11'4") x 2.08m (6'10")

Gross internal floor area (m<sup>2</sup>): 53m<sup>2</sup>  
 EPC Rating: C

