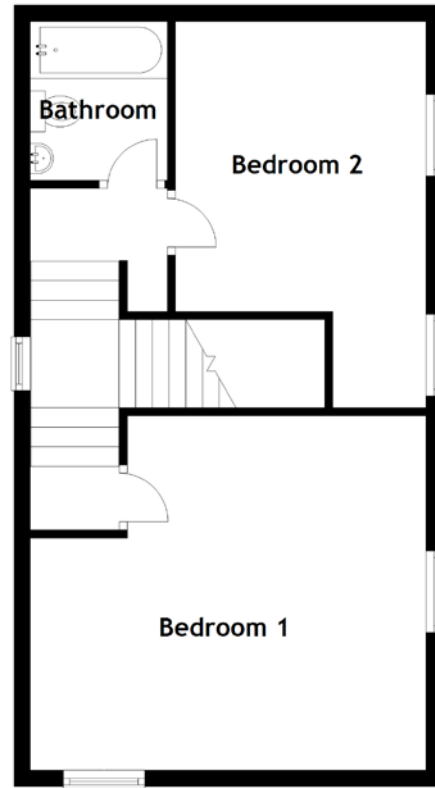
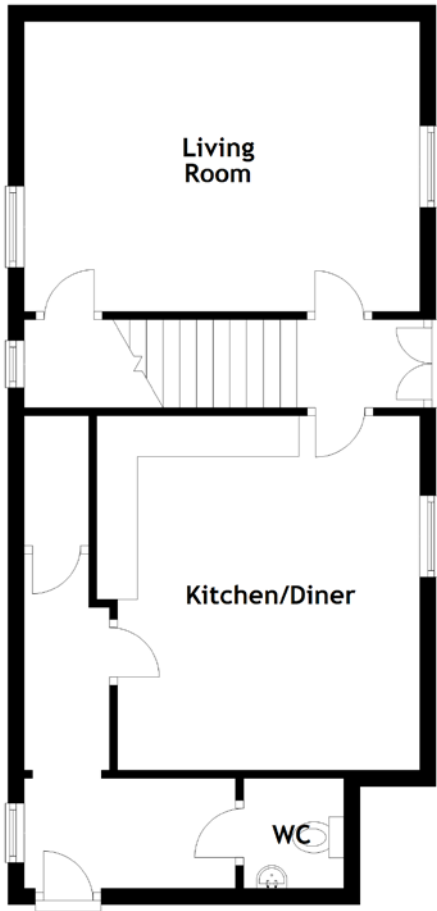


# FLOOR PLAN, DIMENSIONS & MAP



Approximate Dimensions  
(Taken from the widest point)

Living Room 4.85m (15'11") x 3.56m (11'8")  
 Kitchen/Diner 4.35m (14'3") x 3.96m (13')  
 WC 1.35m (4'5") x 1.23m (4')

Bedroom 1 4.85m (15'11") x 4.35m (14'3")  
 Bedroom 2 4.68m (15'4") x 3.07m (10'1")  
 Bathroom 1.95m (6'5") x 1.68m (5'6")

Gross internal floor area (m<sup>2</sup>): 101m<sup>2</sup>  
 EPC Rating: E

