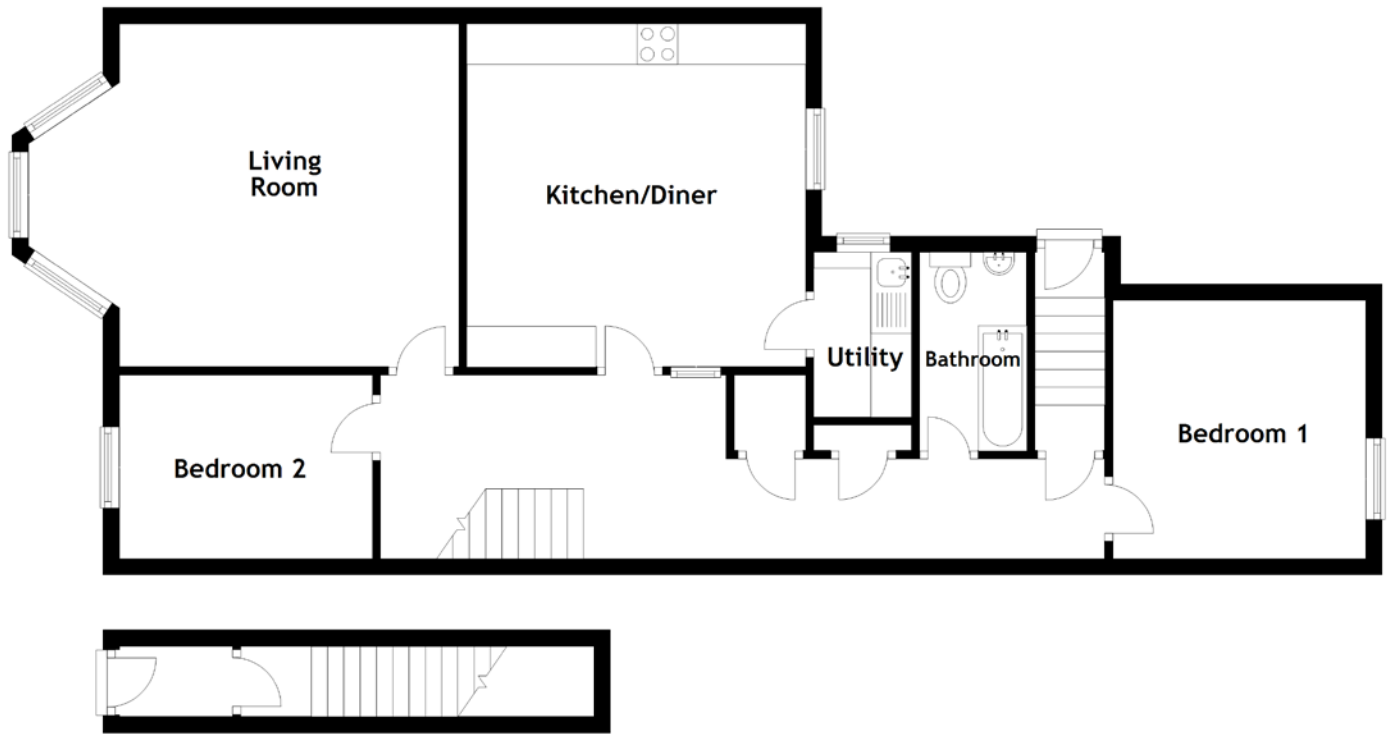


FLOOR PLAN, DIMENSIONS & MAP



Approximate Dimensions (Taken from the widest point)

Living Room 5.29m (17'4") x 4.22m (13'10")
 Kitchen/Diner 4.22m (13'10") x 4.17m (13'8")
 Utility 2.03m (6'8") x 1.20m (3'11")

Bathroom 2.44m (8') x 1.32m (4'4")
 Bedroom 1 3.18m (10'5") x 3.11m (10'2")
 Bedroom 2 3.11m (10'2") x 2.50m (8'2")

Gross internal floor area (m²): 78m² | EPC Rating: E

