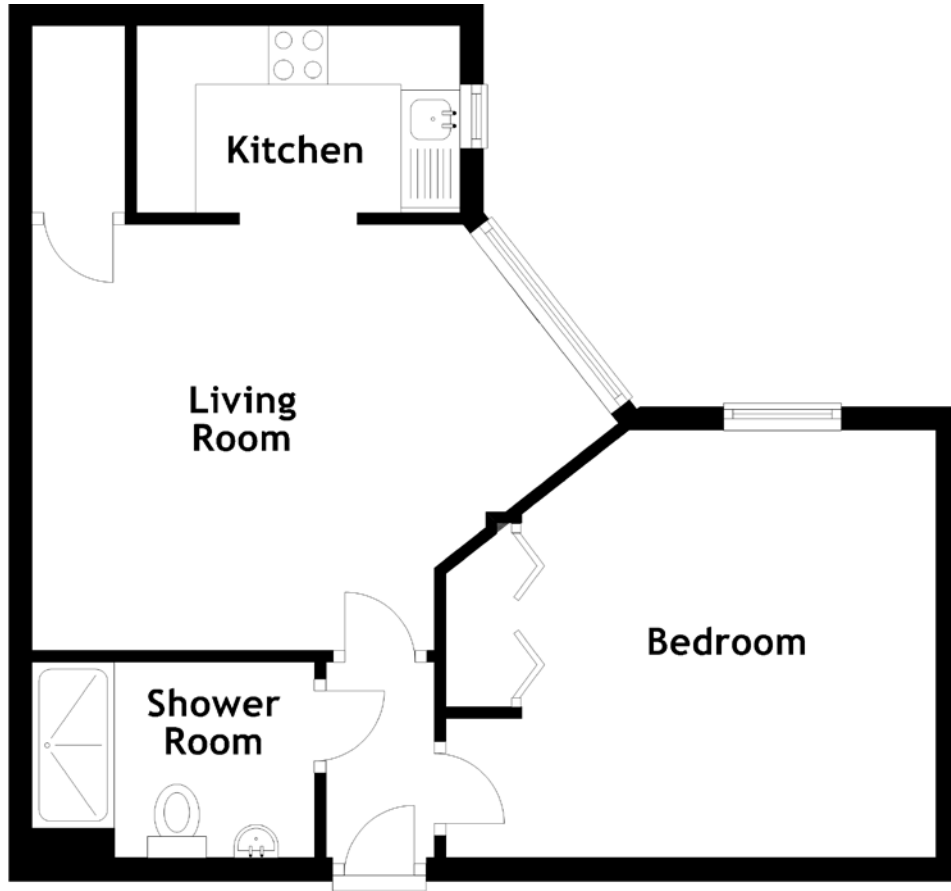


FLOOR PLAN, DIMENSIONS & MAP



Approximate Dimensions
(Taken from the widest point)

Living Room
Kitchen

5.01m (16'5") x 3.62m (11'11")
2.75m (9') x 1.59m (5'3")

Shower Room
Bedroom

2.40m (7'10") x 1.66m (5'5")
4.17m (13'8") x 3.63m (11'11")

Gross internal floor area (m²): 41m²
EPC Rating: C

