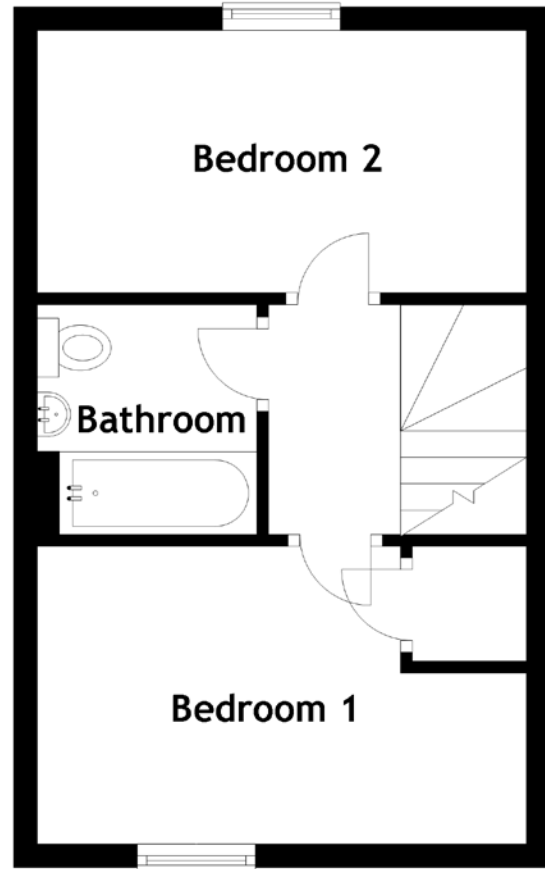
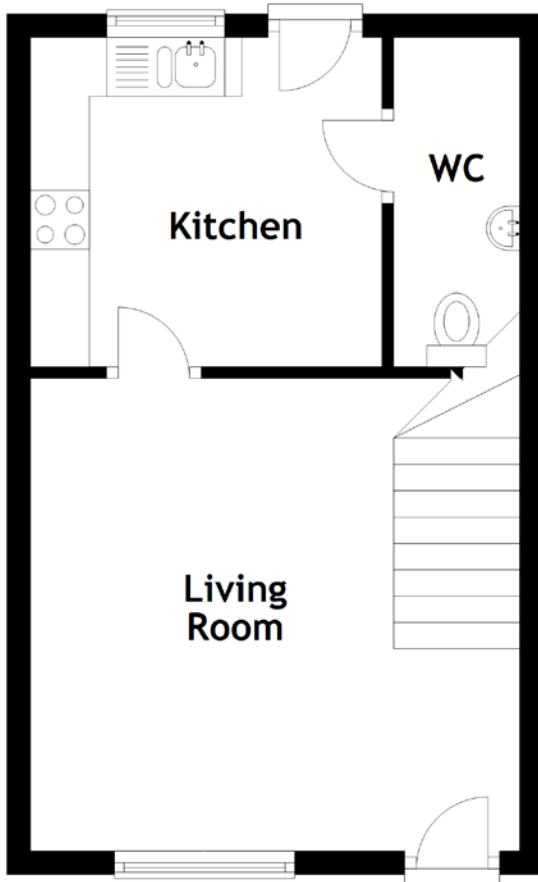


FLOOR PLAN, DIMENSIONS & MAP



Approximate Dimensions (Taken from the widest point)

Living Room 4.15m (13'7") x 4.00m (13'1")
 Kitchen 2.98m (9'9") x 2.79m (9'2")
 WC 2.79m (9'2") x 1.07m (3'6")

Bedroom 1 4.15m (13'7") x 2.52m (8'3")
 Bedroom 2 4.15m (13'7") x 2.22m (7'3")
 Bathroom 1.95m (6'5") x 1.86m (6'1")

Gross internal floor area (m²): 57m² | EPC Rating: B

