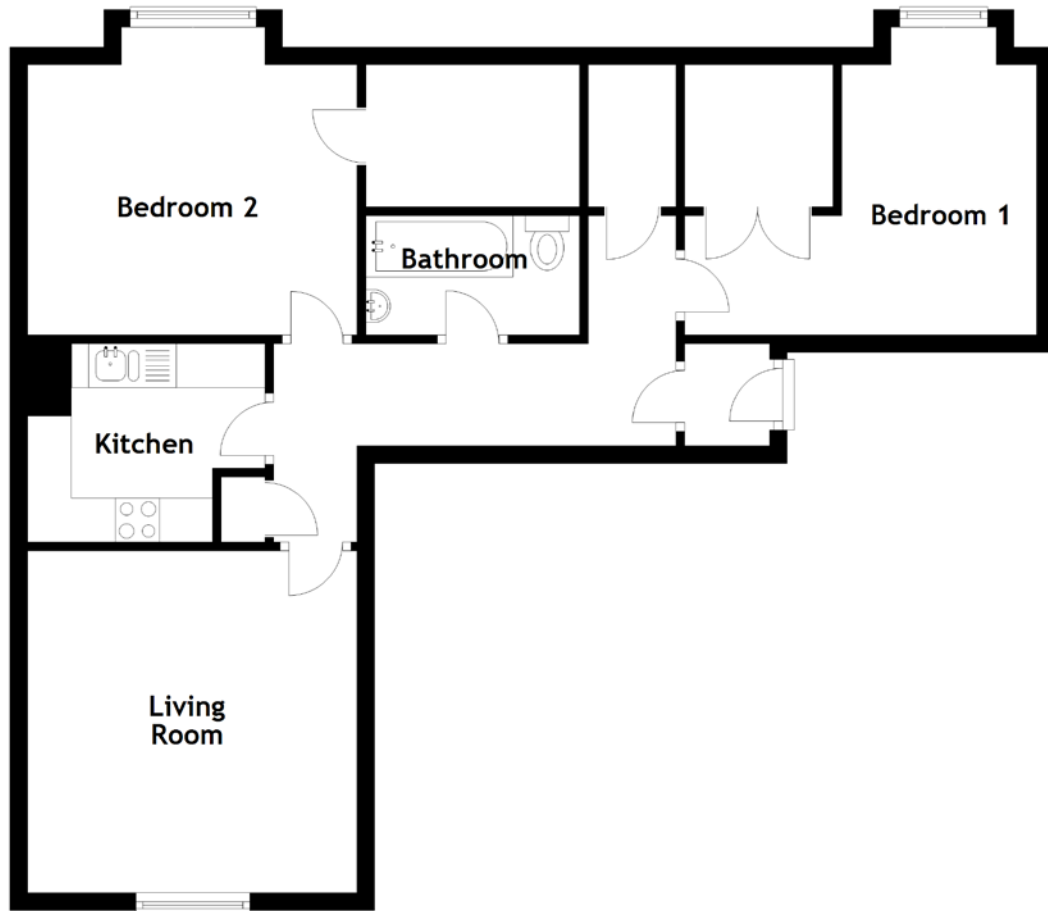


FLOOR PLAN, DIMENSIONS & MAP



Approximate Dimensions (Taken from the widest point)

Living Room 3.90m (12'10") x 3.76m (12'4")
 Kitchen 2.71m (8'11") x 2.26m (7'5")
 Bathroom 2.44m (8') x 1.36m (4'6")

Bedroom 1 4.02m (13'2") x 3.51m (11'6")
 Bedroom 2 3.76m (12'4") x 3.51m (11'6")

Gross internal floor area (m²): 53m²
 EPC Rating: C

