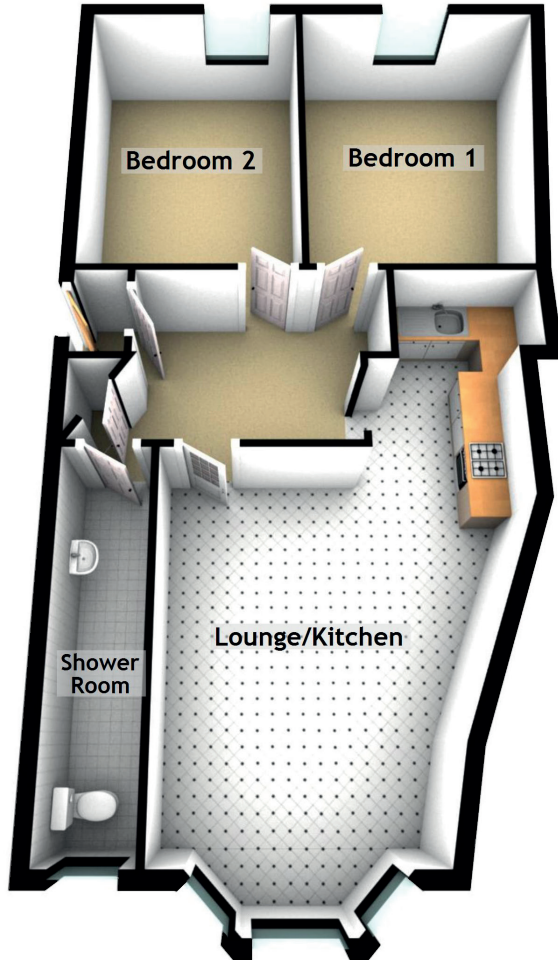


0/2 63 Clifford Street

CESSNOCK, GLASGOW, G51 1QH



Approximate Dimensions (Taken from the widest point)

Lounge/Kitchen	7.20m (23'7") x 4.30m (14'1")
Bedroom 1	4.30m (14'1") x 3.40m (11'2")
Bedroom 2	4.30m (14'1") x 3.00m (9'10")
Shower Room	4.80m (15'9") x 1.00m (3'3")