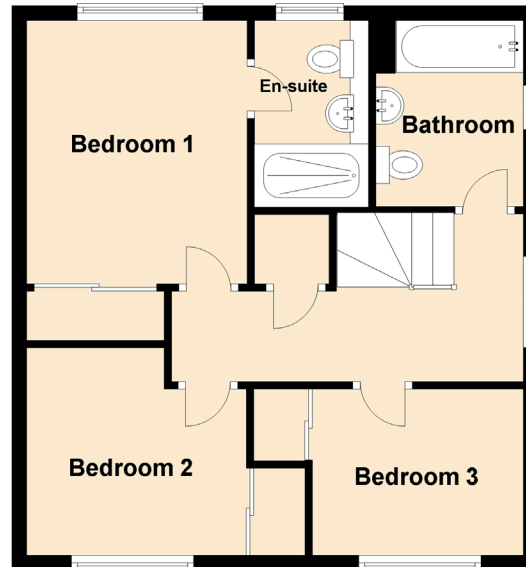
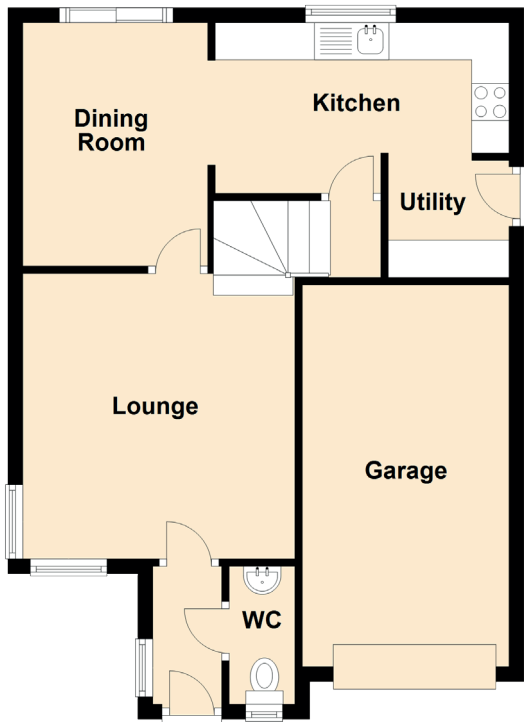


13 Rowanhill Park

PORT SETON, EAST LoTHIAN, EH32 0ST



Approximate Dimensions (Taken from the widest point)

Lounge	4.00m (13'1") x 3.84m (12'7")
Dining Room	3.18m (10'5") x 2.19m (7'2")
Kitchen	3.64m (11'11") x 2.49m (8'2")
Utility	1.60m (5'3") x 1.43m (4'8")
Bedroom 1	3.72m (12'2") x 2.96m (9'9")
En-suite	2.51m (8'3") x 1.53m (5')
Bedroom 2	2.97m (9'9") x 2.79m (9'2")
Bedroom 3	2.95m (9'8") x 2.31m (7'7")
Bathroom	2.50m (8'2") x 1.98m (6'6")
WC	1.75m (5'9") x 0.88m (2'11")
Garage	5.14m (16'10") x 2.50m (8'2")