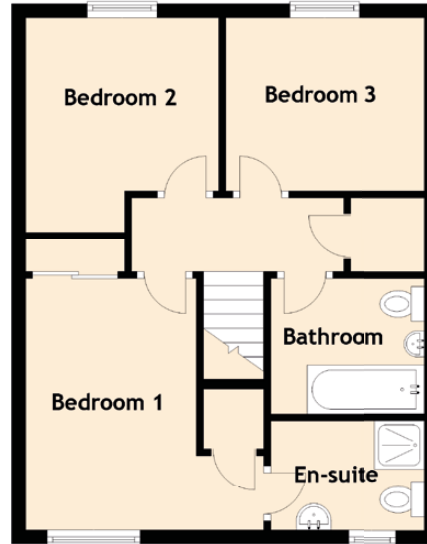
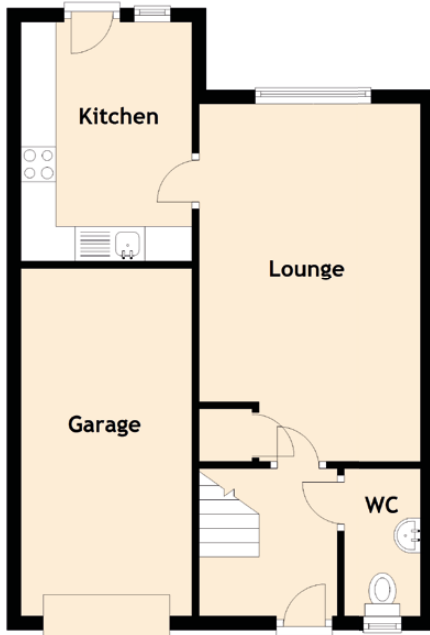


3 Aubigny Row

HADDINGTON, EAST LoTHIAN, EH41 3TG



Approximate Dimensions (Taken from the widest point)

Lounge	5.13m (16'10") x 3.17m (10'5")
Kitchen	3.42m (11'3") x 2.45m (8')
Bedroom 1	3.60m (11'10") x 3.59m (11'9")
En-suite	2.10m (6'11") x 1.57m (5'2")
Bedroom 2	3.08m (10'1") x 2.86m (9'5")
Bedroom 3	2.85m (9'4") x 2.48m (8'2")
Bathroom	2.20m (7'3") x 1.94m (6'4")
WC	2.12m (6'11") x 1.09m (3'7")
Garage	5.00m (16'5") x 2.45m (8')

Gross internal floor area (m²): 91m²