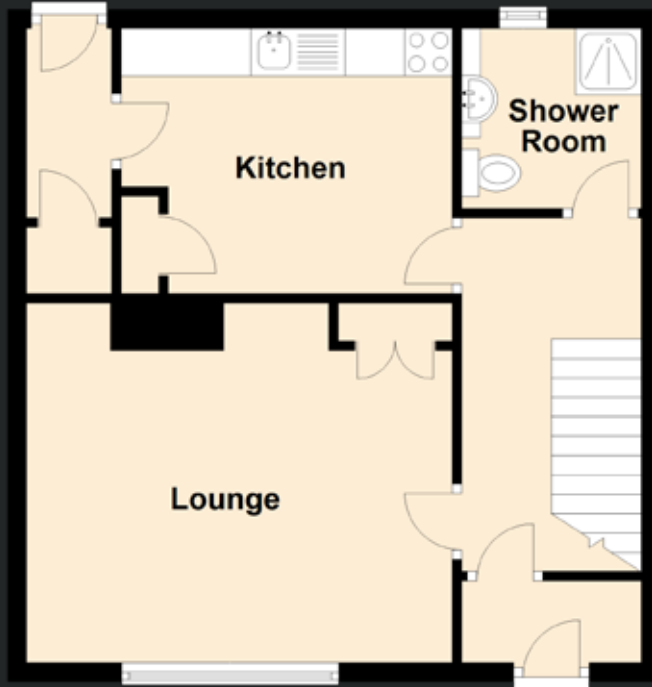


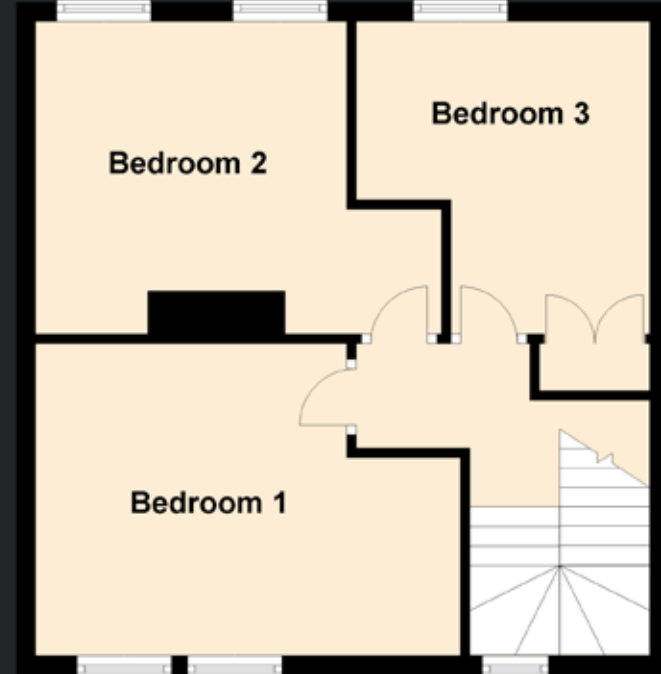
# 88 Gaitside Drive

ABERDEEN, AB10 7BD



Approximate Dimensions  
(Taken from the widest point)

Lounge	4.30m (14'1") x 3.80m (12'6")
Kitchen	3.50m (11'6") x 2.80m (9'2")
Bedroom 1	4.60m (15'1") x 3.30m (10'10")
Bedroom 2	4.30m (14'1") x 3.30m (10'10")
Bedroom 3	3.40m (11'2") x 3.30m (10'10")
Shower Room	1.90m (6'3") x 1.90m (6'3")



Gross internal floor area (m<sup>2</sup>): 91m<sup>2</sup>

EPC Rating: D

Extras (Included in the sale): All fitted floor coverings, blinds, curtains, light fittings and garden shed.