

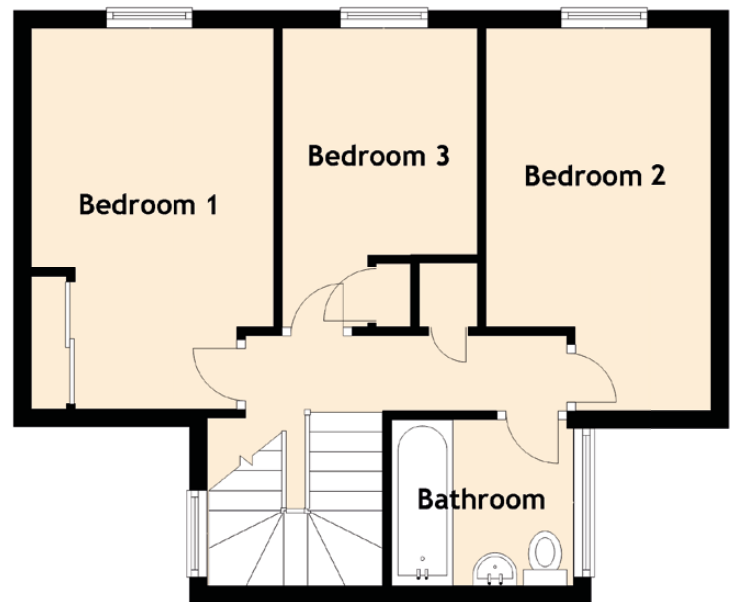
22 Poplar Grove

CRAIGSHILL, LIVINGSTON, WEST LOTHIAN, EH54 5JB

Ground Floor



First Floor



Approximate Dimensions (Taken from the widest point)

Ground Floor

Kitchen	4.55m (14'11") x 2.57m (8'5")
Lounge	5.04m (16'6") x 4.39m (14'5")
WC	2.06m (6'9") x 0.89m (2'11")

First Floor

Bedroom 1	4.38m (14'4") x 2.79m (9'2")
Bedroom 2	4.40m (14'5") x 2.59m (8'6")
Bedroom 3	3.44m (11'3") x 2.24m (7'4")
Bathroom	2.09m (6'10") x 2.09m (6'10")

Gross internal floor area (m²): 88m²