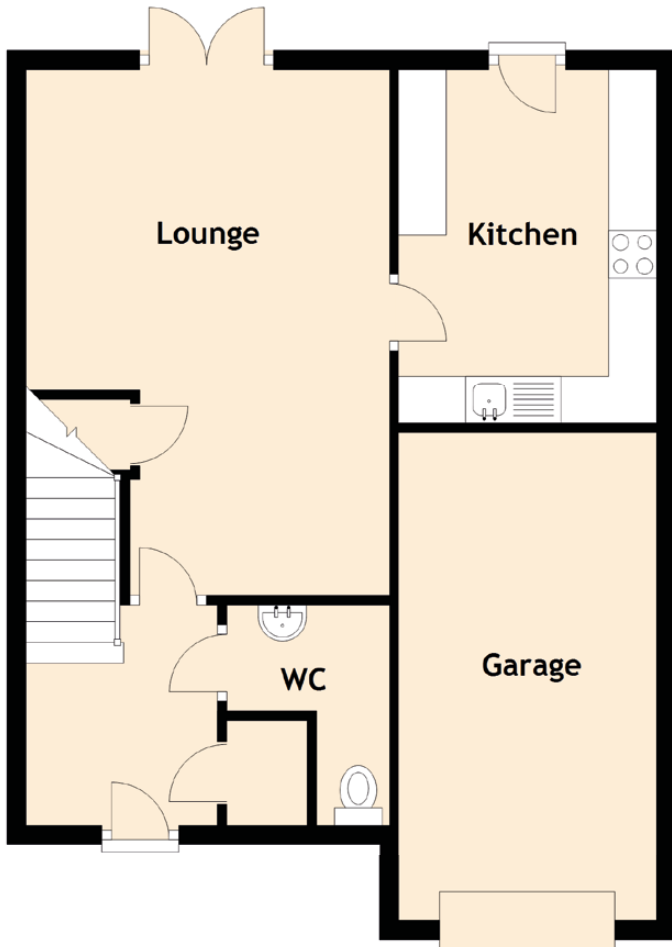


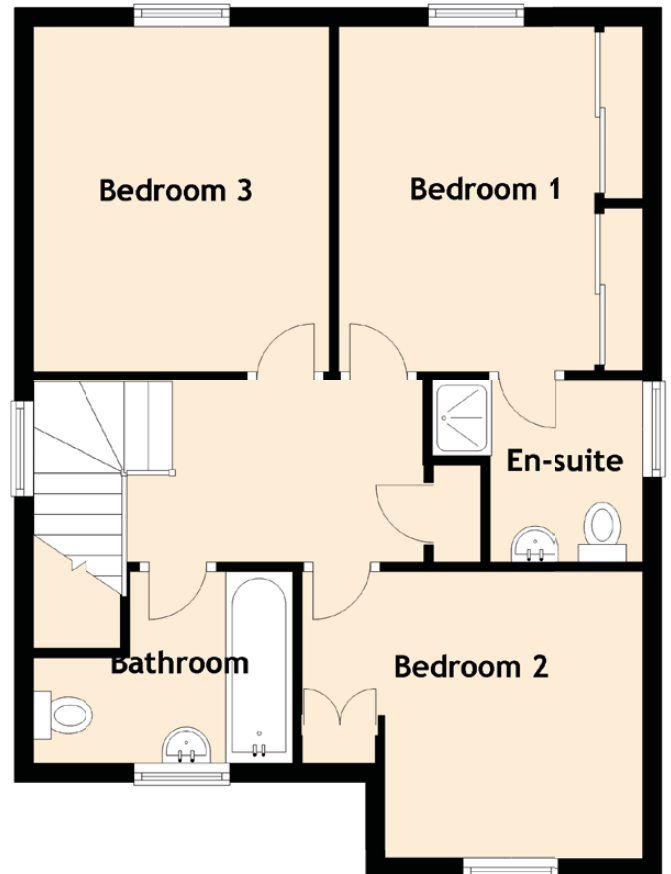
106 Cambridge Crescent

AIRDRIE, ML6 7HS

Ground Floor



First Floor



Approximate Dimensions (Taken from the widest point)

Kitchen	3.70m (12'2") x 2.70m (8'10")
Lounge	5.50m (18'1") x 3.80m (12'6")
WC	2.30m (7'7") x 1.70m (5'7")
Bedroom 1	3.60m (11'10") x 2.95m (9'8")
En-suite	1.90m (6'3") x 1.60m (5'3")
Bedroom 2	3.00m (9'10") x 2.70m (8'10")
Bedroom 3	3.60m (11'10") x 3.10m (10'2")
Bathroom	2.80m (9'2") x 1.97m (6'6")

Gross internal floor area (m²): 96m²