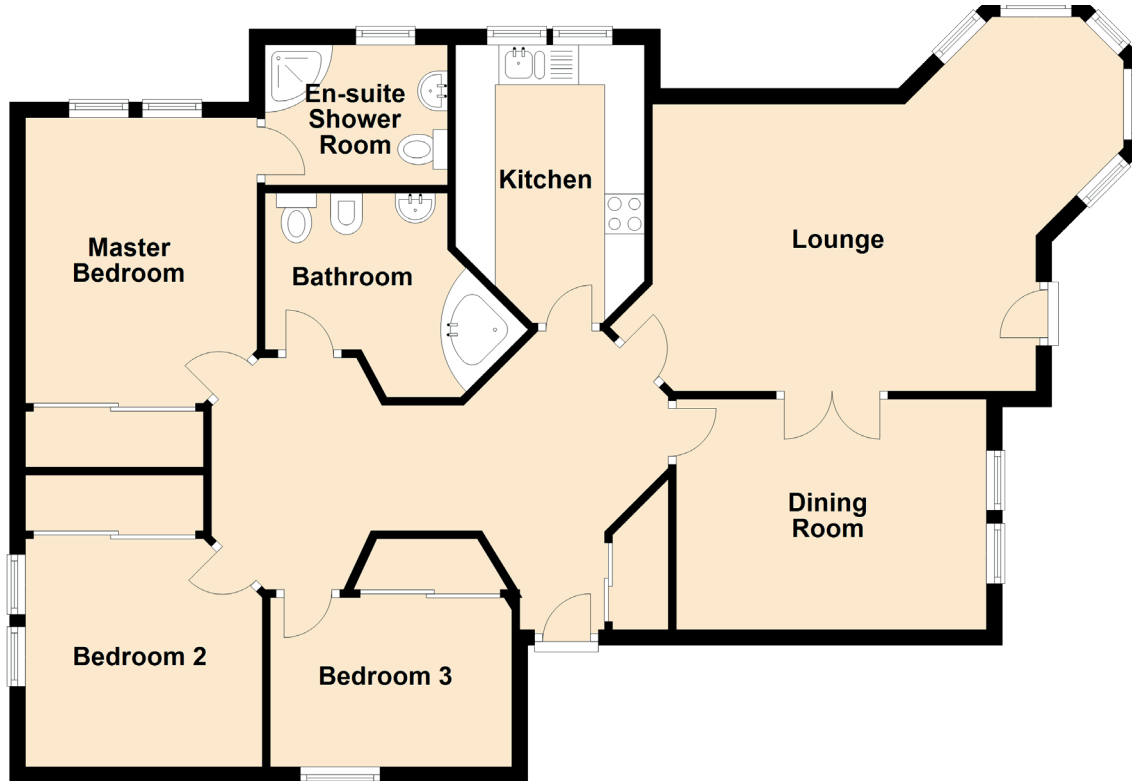


# 28 Bowen Craig

LARGS, NORTH AYRSHIRE, KA30 8TB



Approximate Dimensions (Taken from the widest point)

Lounge	7.03m (23'1") x 3.60m (11'10")
Dining Room	3.89m (12'9") x 2.89m (9'6")
Kitchen	3.49m (11'5") x 2.37m (7'9")
Master Bedroom	3.58m (11'9") x 2.90m (9'6")
En-suite Shower Room	2.29m (7'6") x 1.76m (5'9")
Bedroom 2	2.97m (9'9") x 2.86m (9'5")
Bedroom 3	3.03m (9'11") x 2.61m (8'7")
Bathroom	2.56m (8'5") x 2.29m (7'6")