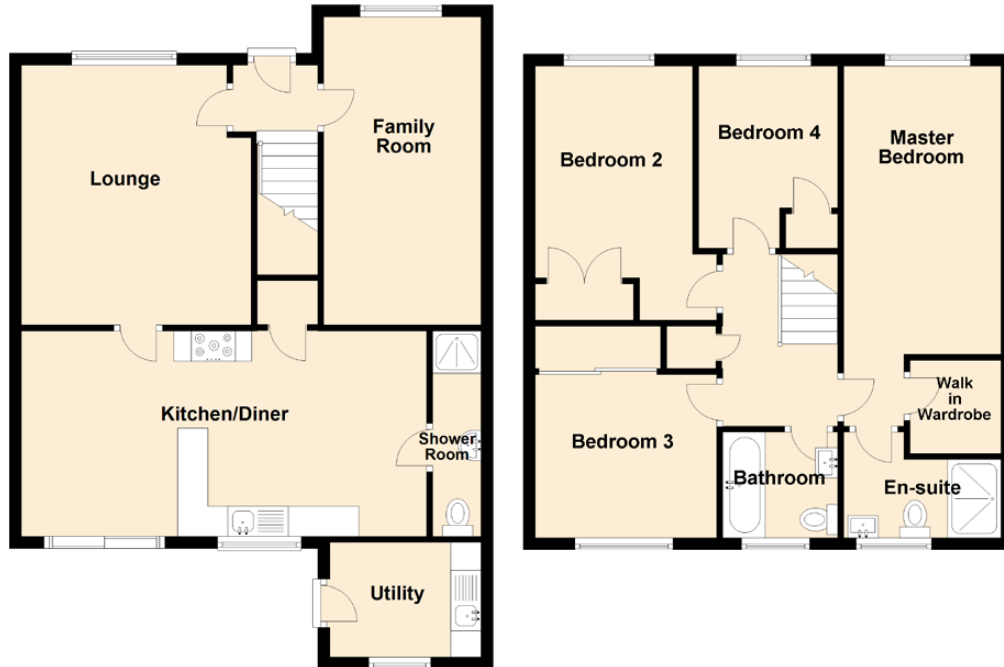


527 Ritchie Park

JOHNSTONE, PA5 8JP



Approximate Dimensions (Taken from the widest point)

Kitchen/Diner	6.70m (22') x 3.40m (11'2")
Lounge	4.30m (14'1") x 3.80m (12'6")
Family Room	5.10m (16'9") x 2.60m (8'6")
Utility	2.50m (8'2") x 1.90m (6'3")
Shower Room	3.20m (10'6") x 0.80m (2'7")
Master Bedroom	5.95m (19'6") x 2.60m (8'6")
Bedroom 2	4.20m (13'9") x 3.00m (9'10")
Bedroom 3	3.00m (9'10") x 2.70m (8'10")
Bedroom 4	3.01m (9'10") x 2.30m (7'7")
Bathroom	1.90m (6'3") x 1.75m (5'9")
En-suite	2.60m (8'6") x 2.00m (6'7")