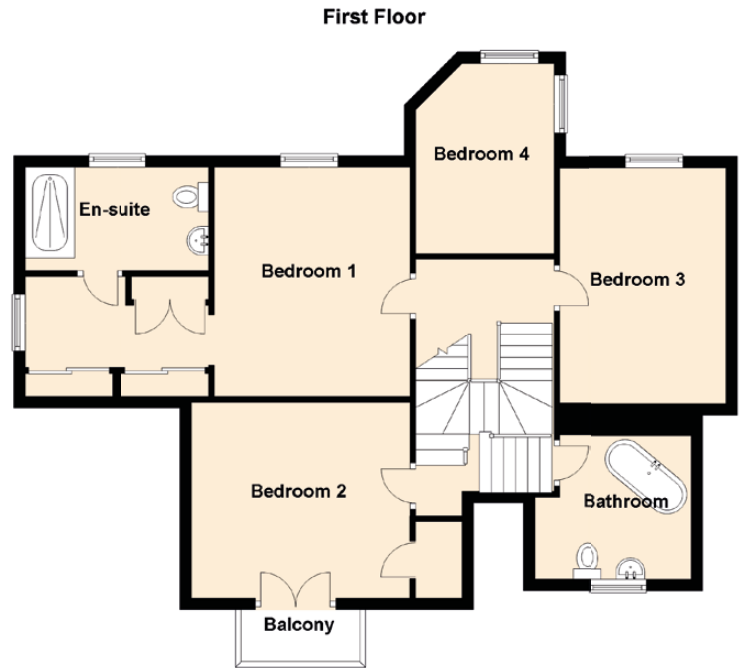
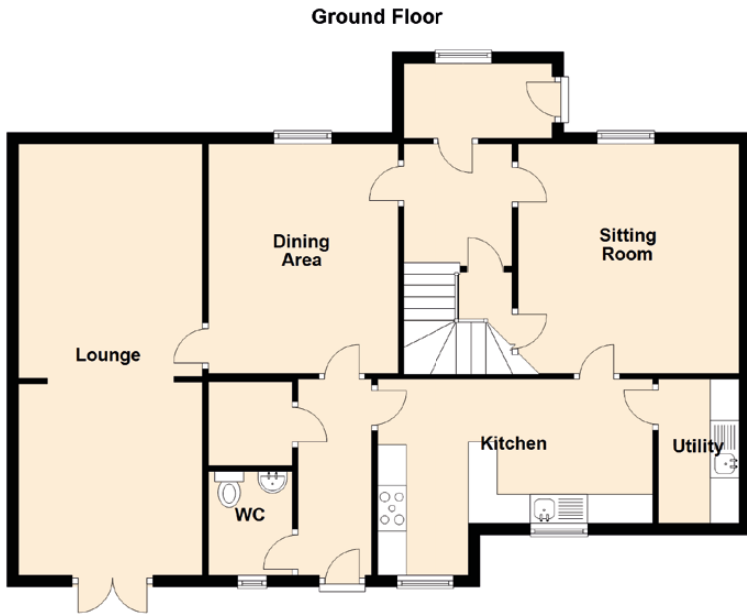


Old School House

40 MAIN STREET, HILLEND, DUNFERMLINE, FIFE, KY11 9LE



Approximate Dimensions (Taken from the widest point)

Ground Floor

Lounge	7.50m (24'7") x 3.20m (10'6")
Sitting Room	4.10m (13'5") x 3.50m (11'6")
Kitchen	4.80m (15'9") x 2.50m (8'2")
Dining Area	4.00m (13'1") x 3.30m (10'10")
Utility	2.50m (8'2") x 1.40m (4'7")
WC	1.80m (5'11") x 1.50m (4'11")

First Floor

Bedroom 1	4.00m (13'1") x 3.40m (11'2")
En-suite	3.20m (10'6") x 1.90m (6'3")
Bedroom 2	3.80m (12'6") x 3.40m (11'2")
Bedroom 3	4.10m (13'5") x 2.90m (9'6")
Bedroom 4	3.30m (10'10") x 2.40m (7'10")
Bathroom	2.80m (9'2") x 2.50m (8'2")

Gross internal floor area (m²): 169m²