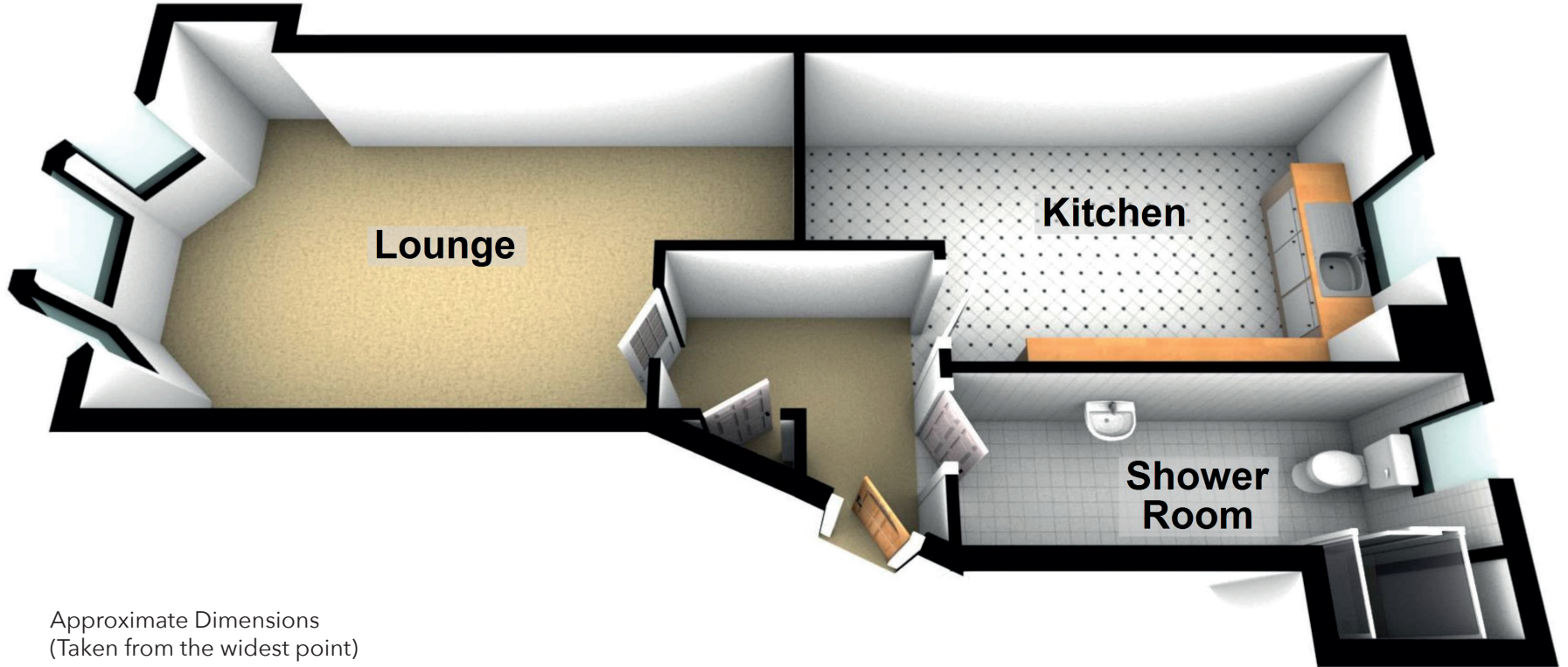


0-1 20 Clifford Street

CESSNOCK, GLASGOW, G51 1NT



Approximate Dimensions
(Taken from the widest point)

Lounge	5.80m (19') x 3.40m (11'2")
Kitchen	5.40m (17'9") x 3.00m (9'10")
Shower Room	4.20m (13'9") x 1.40m (4'7")