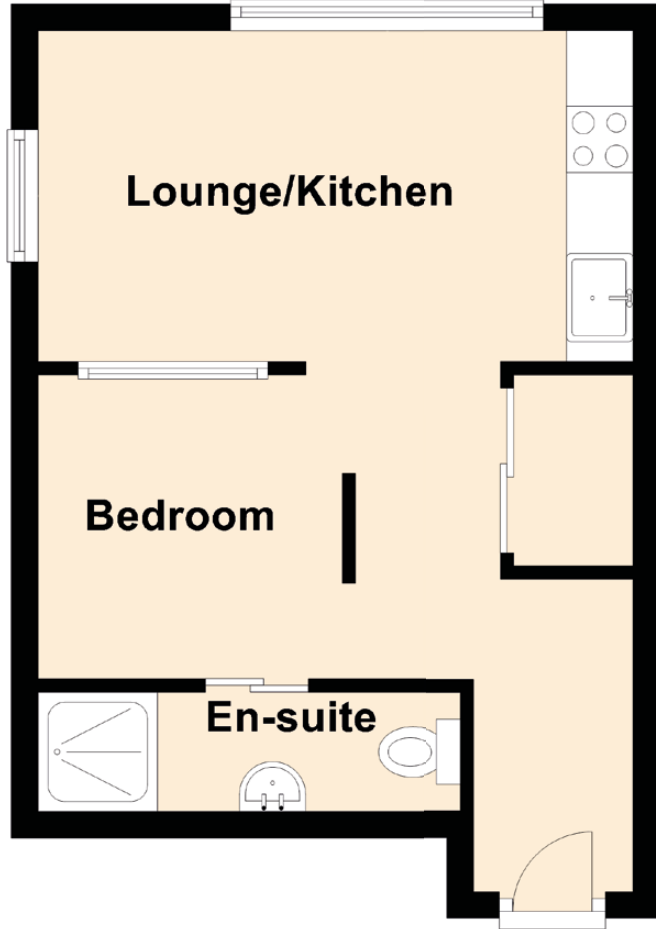


# 9/2 350 Meadowside Quay Walk

GLASGOW HARBOUR, GLASGOW, G11 6DL



Approximate Dimensions (Taken from the widest point)

Lounge/Kitchen	4.50m (14'9") x 2.50m (8'2")
Bedroom	4.50m (14'9") x 2.30m (7'7")
En-suite	2.90m (9'6") x 0.90m (2'11")