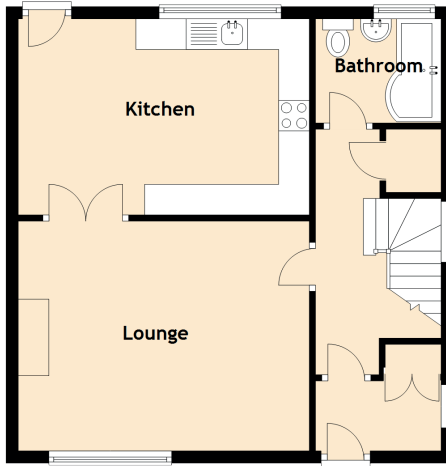


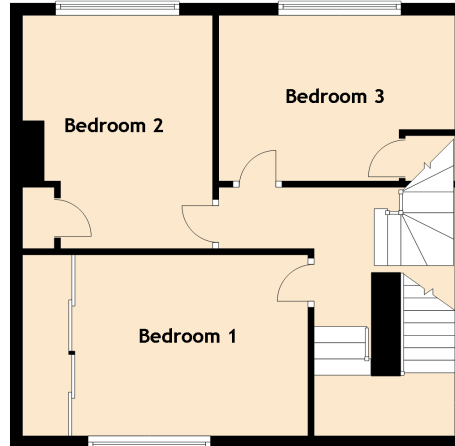
17 Keavil Place

CROSSFORD, DUNFERMLINE, KY12 8NY

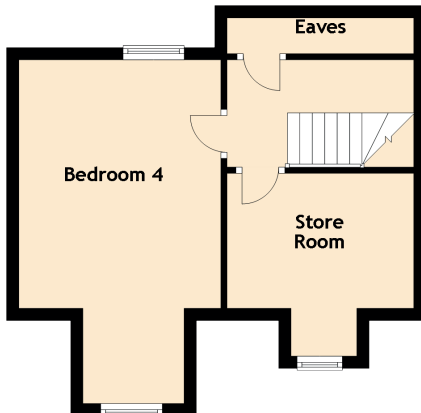
Ground Floor



First Floor



Second Floor



Approximate Dimensions

(Taken from the widest point)

Lounge	4.75m (15'7") x 3.75m (12'4")
Kitchen	4.75m (15'7") x 3.20m (10'6")
Bathroom	2.05m (6'9") x 1.70m (5'7")
Bedroom 1	3.80m (12'6") x 2.95m (9'8")
Bedroom 2	3.80m (12'6") x 3.10m (10'2")
Bedroom 3	3.85m (12'8") x 2.70m (8'10")
Bedroom 4	5.60m (18'4") x 3.30m (10'10")
Store Room	3.05m (10') x 2.20m (7'3")