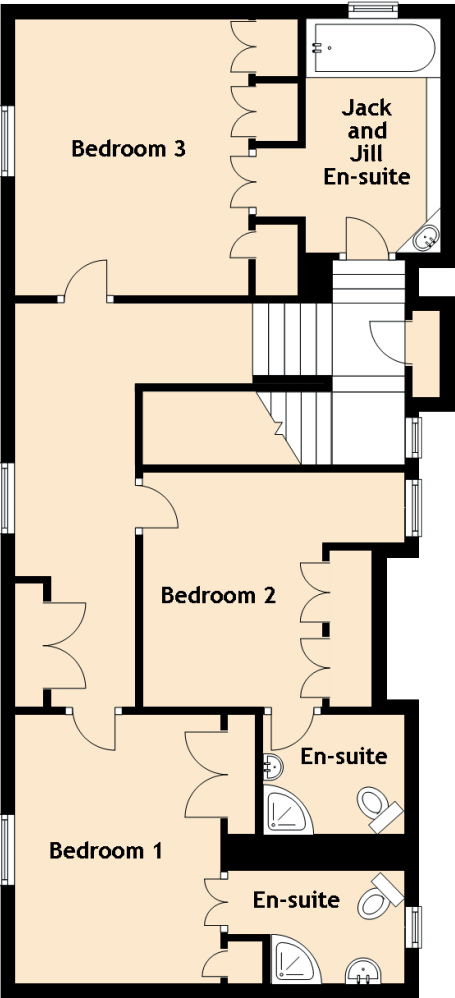
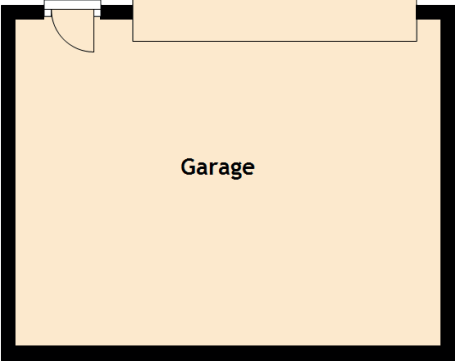


# The Shoppe 77 High Street

NEW ABERDOUR, FRASERBURGH, AB43 6LD



Approximate Dimensions  
(Taken from the widest point)

Ground Floor	
Sun Room	3.50m (11'6") x 1.80m (5'11")
Kitchen	3.50m (11'6") x 2.80m (9'2")
Dining Room	3.80m (12'6") x 3.50m (11'6")
Lounge	4.70m (15'5") x 4.20m (13'9")
WC	1.50m (4'11") x 1.30m (4'3")
Utility	2.30m (7'7") x 1.50m (4'11")
Shop	10.00m (32'10") x 6.30m (20'8")
Stock Room	5.00m (16'5") x 3.30m (10'10")

Annexe	
Family Room	5.10m (16'9") x 5.00m (16'5")
Kitchen	2.10m (6'11") x 1.60m (5'3")
Shower Room	1.70m (5'7") x 1.60m (5'3")
First Floor	
Bedroom 3	3.90m (12'10") x 3.30m (10'10")
Bedroom 1	3.40m (11'2") x 2.90m (9'6")
En-suite	2.50m (8'2") x 1.60m (5'3")
En-suite	2.00m (6'7") x 1.70m (5'7")
Jack and Jill En-suite	3.30m (10'10") x 1.90m (6'3")
Bedroom 2	3.70m (12'2") x 3.31m (10'10")
Garage	
	6.00m (19'8") x 5.00m (16'5")