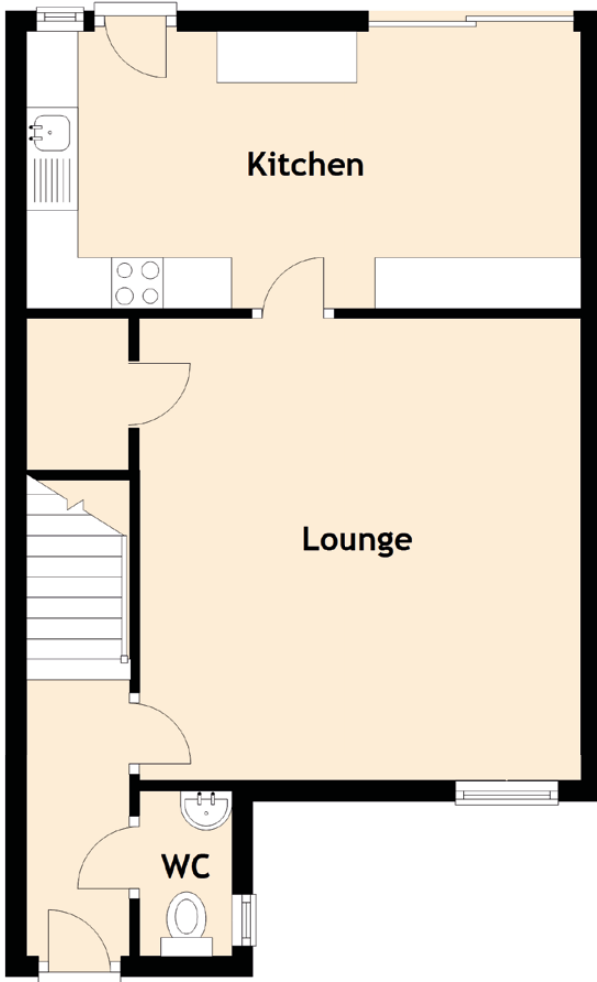


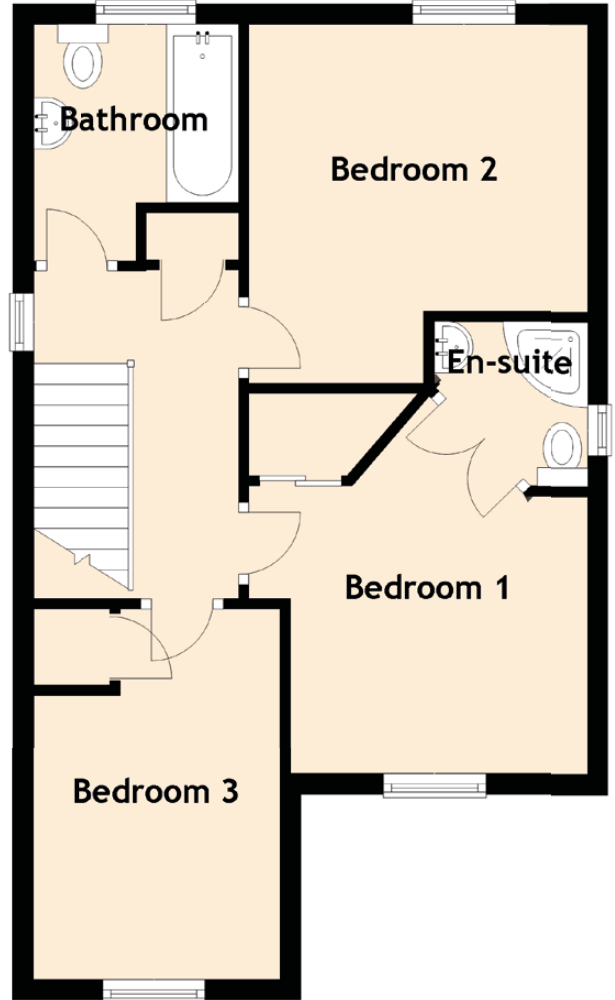
43 Alloway Drive

KIRKCALDY, FIFE, KY2 6DX

Ground Floor



First Floor



Approximate Dimensions (Taken from the widest point)

Ground Floor

Lounge	4.50m (14'9") x 4.30m (14'1")
Kitchen	5.40m (17'9") x 2.70m (8'10")
WC	1.60m (5'3") x 0.90m (2'11")

First Floor

Bedroom 1	3.10m (10'2") x 2.90m (9'6")
En-suite	1.60m (5'3") x 1.60m (5'3")
Bedroom 2	3.50m (11'6") x 3.30m (10'10")
Bedroom 3	3.60m (11'10") x 2.30m (7'7")
Bathroom	2.30m (7'6") x 2.00m (6'7")

Gross internal floor area (m²): 88m²