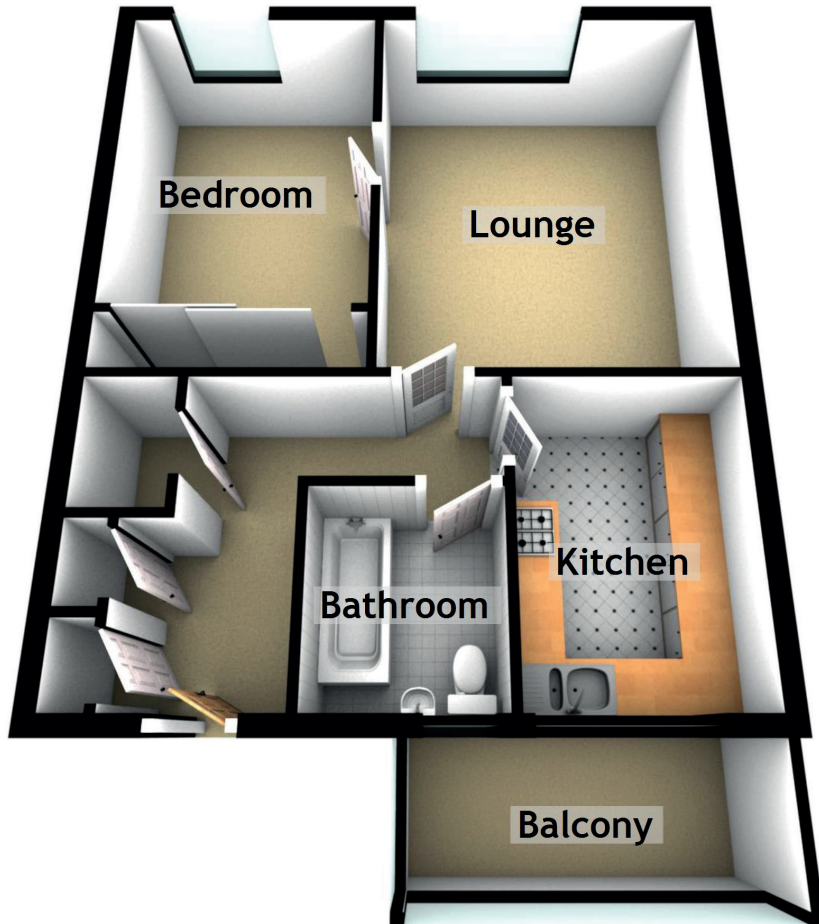


1/2 5 Broomhill Path

BROOMHILL, GLASGOW, G11 7AL



Approximate Dimensions (Taken from the widest point)

Lounge	4.30m (14'1") x 3.50m (11'6")
Kitchen	3.10m (10'2") x 2.20m (7'3")
Bedroom	3.60m (11'10") x 2.70m (8'10")
Bathroom	2.00m (6'7") x 1.80m (5'11")
Balcony	3.20m (10'6") x 1.40m (4'7")