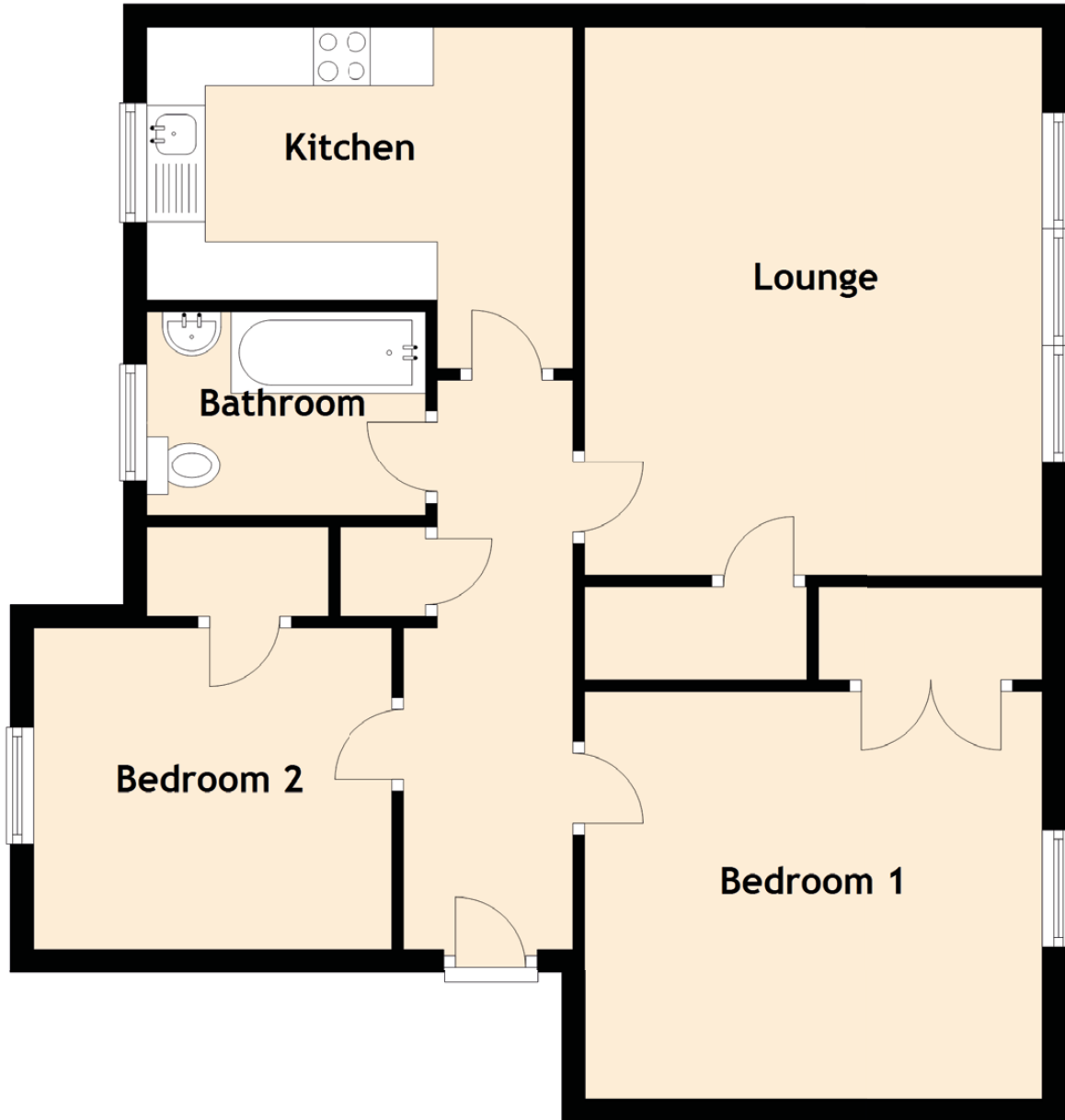


# 2D Forrester Park Drive

CORSTORPHINE, EDINBURGH, EH12 9AU



Approximate Dimensions (Taken from the widest point)

Lounge	4.70m (15'5") x 3.92m (12'10")
Kitchen	3.66m (12') x 2.34m (7'8")
Bedroom 1	3.49m (11'5") x 3.45m (11'4")
Bedroom 2	3.08m (10'1") x 2.75m (9')
Bathroom	2.57m (8'5") x 1.43m (4'8")

Gross internal floor area (m<sup>2</sup>): 59m<sup>2</sup>