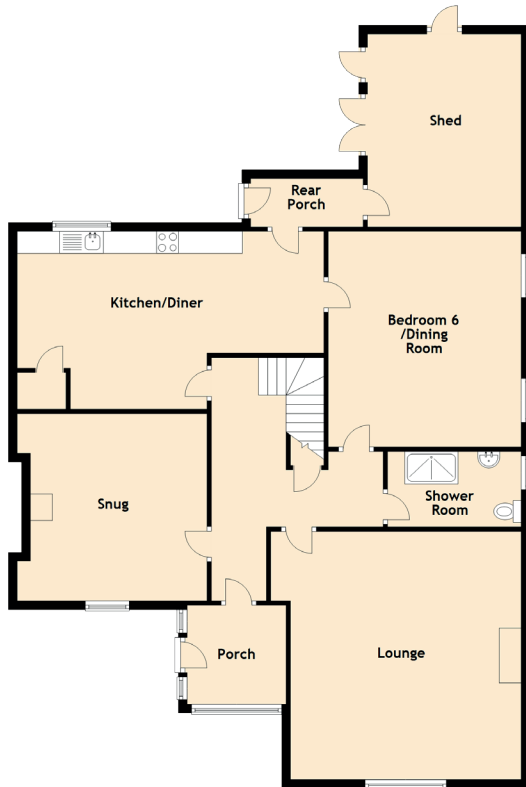


Eyebank House

MAIN STREET, RESTON, EYEMOUTH, TD14 5JP



Approximate Dimensions (Taken from the widest point)

Ground Floor

Lounge	5.65m (18'6") x 5.25m (17'3")
Kitchen/Diner	6.98m (22'11") x 4.05m (13'3")
Snug	4.32m (14'2") x 4.26m (14')
Bedroom 6/Dining Room	4.91m (16'1") x 4.39m (14'5")
Shower Room	3.04m (10') x 1.72m (5'8")

First Floor

Bedroom 1	5.30m (17'5") x 4.27m (14')
En-suite	2.43m (8') x 1.50m (4'11")
Bedroom 2	4.20m (13'9") x 4.06m (13'4")
Bedroom 3	4.20m (13'9") x 4.09m (13'5")
Bedroom 4	4.38m (14'4") x 3.90m (12'10")
Bedroom 5	4.18m (13'9") x 3.77m (12'4")
Bathroom	2.72m (8'11") x 2.32m (7'7")