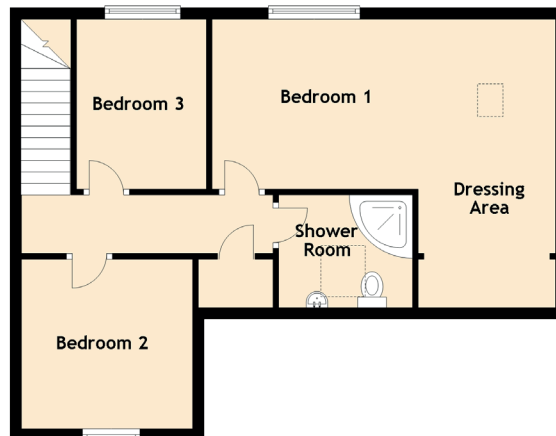
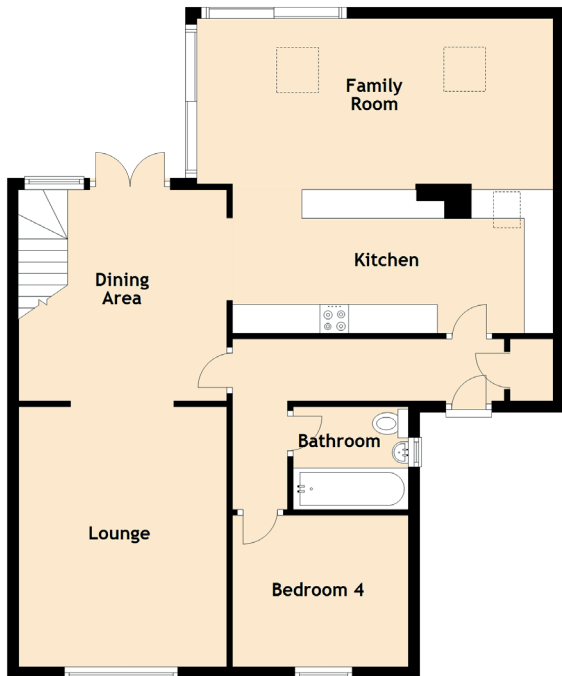


SPECIFICATIONS & DETAILS



Approximate Dimensions (Taken from the widest point)

Ground Floor

Lounge	4.53m (14'10") x 3.62m (11'11")
Kitchen	5.58m (18'4") x 2.50m (8'2")
Dining	3.66m (12') x 3.27m (10'9")
Family Room	6.20m (20'4") x 2.88m (9'5")
Bedroom 4	3.06m (10') x 2.62m (8'7")
Bathroom	1.96m (6'5") x 1.79m (5'10")

First Floor

Bedroom 1	5.69m (18'8") x 4.08m (13'5")
Bedroom 2	2.98m (9'9") x 2.95m (9'8")
Bedroom 3	2.96m (9'9") x 2.26m (7'5")
Shower Room	2.33m (7'8") x 1.96m (6'5")

Gross internal floor area (m²): 129m² | EPC Rating: C

