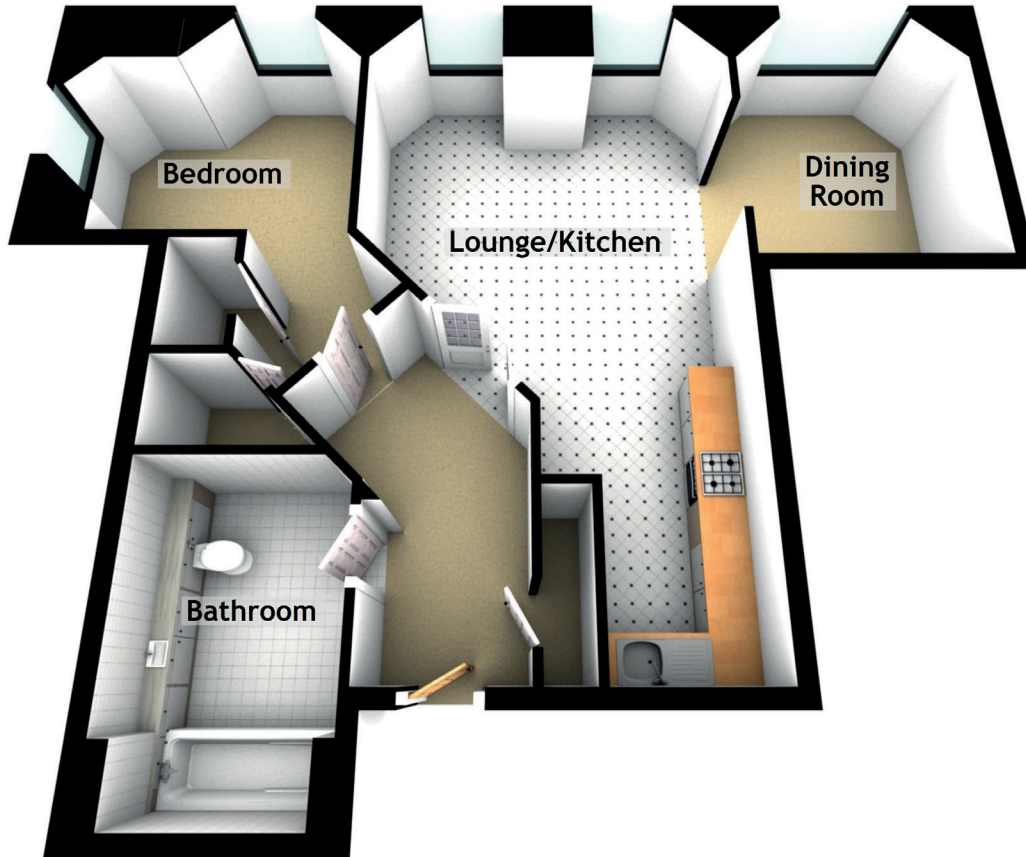


# B5 The Angel Building

69 KENT ROAD, CHARING CROSS, GLASGOW, G3 7EG



Approximate Dimensions  
(Taken from the widest point)

Lounge/Kitchen	7.80m (25'7") x 2.30m (7'7")
Dining Room	2.80m (9'2") x 2.70m (8'10")
Bedroom	3.90m (12'10") x 3.50m (11'6")
Bathroom	3.40m (11'2") x 2.20m (7'3")