

# 23 Gellymill Street

MACDUFF, ABERDEENSHIRE, AB44 1TN

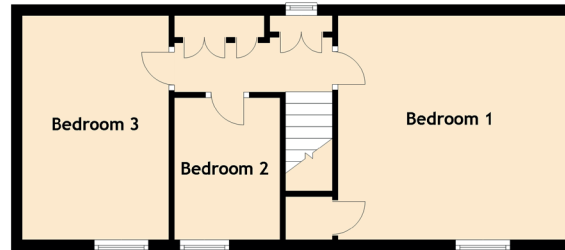
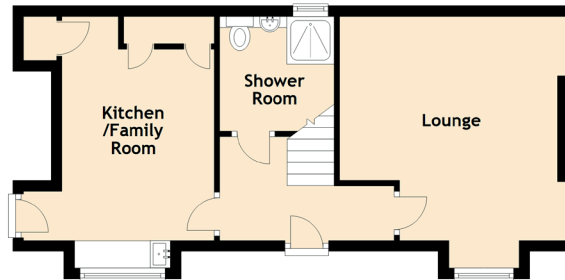
Approximate Dimensions (Taken from the widest point)

## 23 Gellymill Street

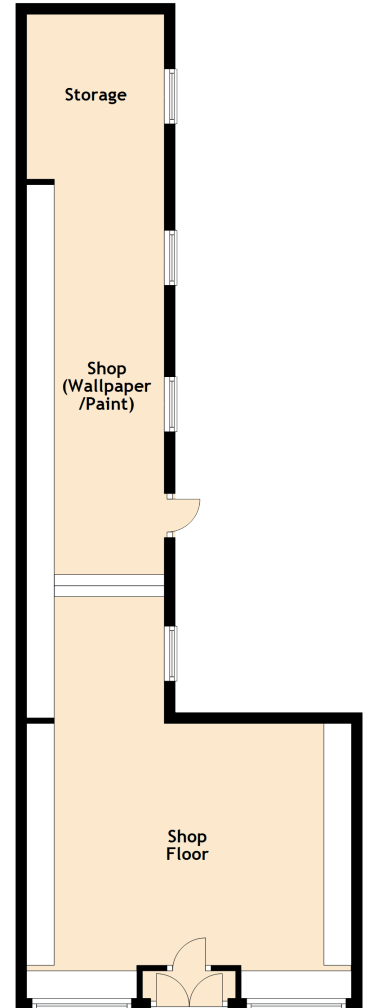
Lounge	4.20m (13'9") x 4.10m (13'5")
Kitchen/Family Room	4.60m (15'1") x 2.80m (9'2")
Bedroom 1	4.20m (13'9") x 4.20m (13'9")
Bedroom 2	2.60m (8'6") x 1.80m (5'11")
Bedroom 3	4.00m (13'1") x 2.40m (7'10")
Shower Room	2.10m (6'11") x 2.10m (6'11")

## 27 Gellymill Street (Shop)

Shop Floor	5.90m (19'4") x 4.40m (14'5")
Shop (Wallpaper/Paint)	9.70m (31'10") x 2.50m (8'2")
Storage	3.00m (9'10") x 2.50m (8'2")



23 Gellymill Street



27 Gellymill Street (Shop)

# 25 Gellymill Street

MACDUFF, ABERDEENSHIRE, AB44 1TN

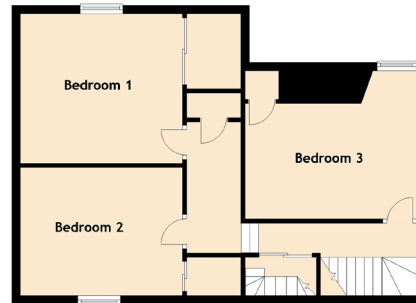
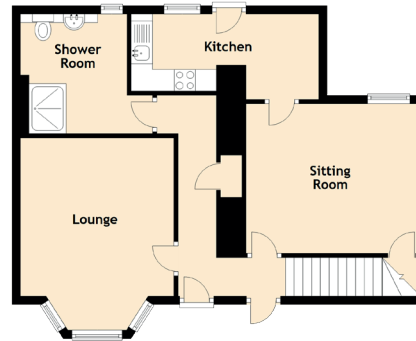
Approximate Dimensions (Taken from the widest point)

## 23 Gellymill Street

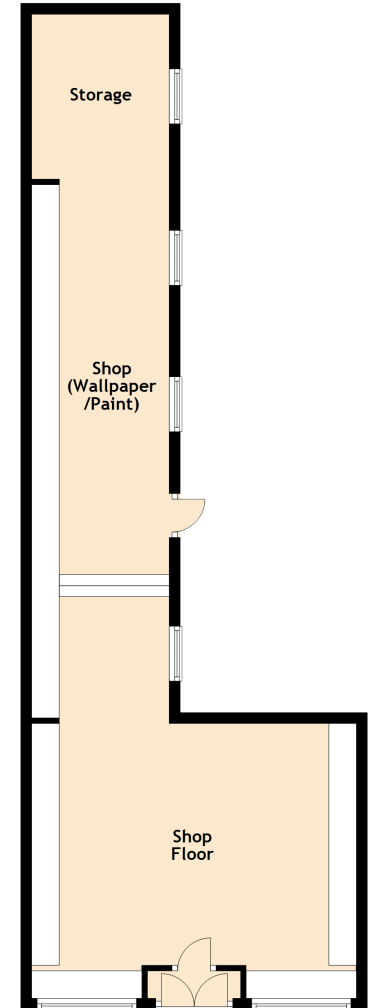
Lounge	3.70m (12'2") x 3.60m (11'10")
Shower Room	2.60m (8'6") x 2.50m (8'2")
Kitchen	4.40m (14'5") x 1.80m (5'11")
Sitting Room	4.10m (13'5") x 3.50m (11'6")
Bedroom 3	4.12m (13'6") x 2.70m (8'10")
Bedroom 2	3.80m (12'6") x 3.00m (9'10")
Bedroom 1	3.80m (12'6") x 3.50m (11'6")
Attic	5.00m (16'5") x 3.50m (11'6")

## 27 Gellymill Street (Shop)

Shop Floor	5.90m (19'4") x 4.40m (14'5")
Shop (Wallpaper/Paint)	9.70m (31'10") x 2.50m (8'2")
Storage	3.00m (9'10") x 2.50m (8'2")



25 Gellymill Street



27 Gellymill Street (Shop)