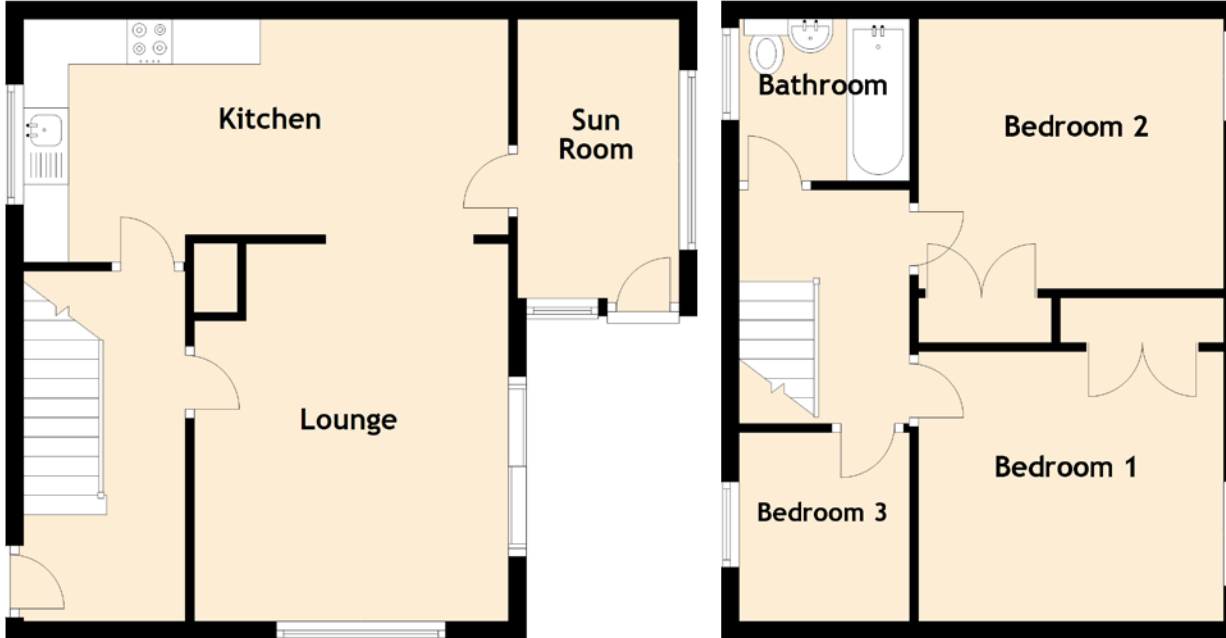


76 Beath View

DUNFERMLINE, KY11 4UE



Approximate Dimensions

(Taken from the widest point)

Kitchen	5.40m (17'9") x 2.40m (7'10")
Lounge	4.20m (13'9") x 3.50m (11'6")
Sun Room	3.10m (10'2") x 1.80m (5'11")
Bedroom 1	3.50m (11'6") x 3.00m (9'10")
Bedroom 2	3.40m (11'2") x 3.00m (9'10")
Bedroom 3	2.10m (6'11") x 1.90m (6'3")
Bathroom	1.90m (6'3") x 1.80m (5'11")

Gross internal floor area (m²): 79m²

EPC Rating: D