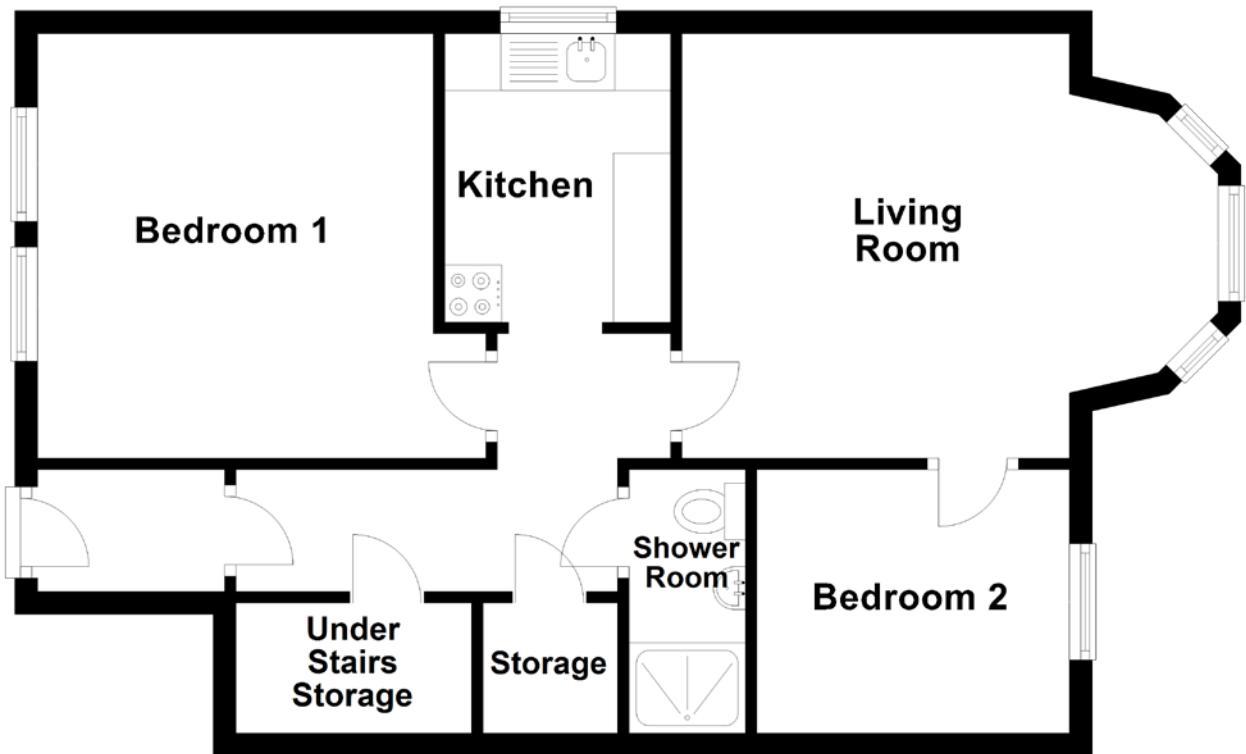


FLOOR PLAN, DIMENSIONS & MAP



Approximate Dimensions (Taken from the widest point)

Living Room 4.70m (15'5") x 3.72m (12'2")
Kitchen 2.53m (8'4") x 1.98m (6'6")
Bedroom 1 3.93m (12'11") x 3.72m (12'2")

Bedroom 2 2.74m (9') x 2.31m (7'7")
Shower Room 2.31m (7'7") x 1.02m (3'4")

Gross internal floor area (m²): 59m²
EPC Rating: D

